

Basic Information

Product Name	Anti-p70 S6K/RPS6KB1 (Phospho-T421+S424) Antibody (Clone#BHD-18)
Gene Name	RPS6KB1
Source	Rabbit
Clonality	Monoclonal
Isotype	IgG
Species Reactivity	human, rat
Tested Application	WB, IP
Contents	500 ug/ml; Rabbit IgG in phosphate buffered saline, pH 7.4, 150mM NaCl, 0.02% sodium azide, 0.4-0.5 mg/ml BSA and 50% glycerol.
Immunogen	A synthesized peptide derived from human Phospho-S6K1 (T421 + S424)
Concentration	500 ug/ml
Purification	Affinity-chromatography
Observed MW	59 kDa
Dilution Ratios	Western blot (WB): 1:500-2000 ImmunoPrecipitation (IP):1:30

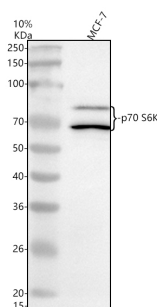
Storage

12 months from date of receipt, -20°C as supplied. 6 months 2 to 8°C after reconstitution. Avoid repeated freezing and thawing.

Reference

Anti-p70 S6K/RPS6KB1 (Phospho-T421+S424) Antibody (Clone#BHD-18)被引用在4文献中。

Selected Validation Data

Anti-p70 S6K/RPS6KB1 (Phospho-T421+S424) Antibody (Clone#BHD-18)**Catalog Number: BM4141**

Western blot analysis of anti-p70 S6K/RPS6KB1 (Phospho-T421+S424) antibody (BM4141). The sample well of each lane was loaded with 30 ug of sample under reducing conditions.

Lane 1: human MCF-7 whole cell lysates.

After electrophoresis, proteins were transferred to a membrane. Then the membrane was incubated with rabbit anti-p70 S6K/RPS6KB1 (Phospho-T421+S424) antigen affinity purified monoclonal antibody (BM4141) at a dilution of 1:1000 and probed with a goat anti-rabbit IgG-HRP secondary antibody (Catalog # BA1054). The signal is developed using ECL Plus Western Blotting Substrate (Catalog # AR1197). A specific band was detected for p70 S6K/RPS6KB1 (Phospho-T421+S424) at approximately 270 kDa. The expected band size for p70 S6K/RPS6KB1 (Phospho-T421+S424) is at 242 kDa.