

Basic Information

Product Name	Anti-ARPC5 Antibody (Clone#CCD-1)	
Gene Name	ARPC5	
Source	Rabbit	
Clonality	Monoclonal	
Isotype	IgG	
Species Reactivity	human, mouse, rat	
Tested Application	WB, IHC, ICC/IF, IP, FCM	
Contents	500 ug/ml; Rabbit IgG in phosphate buffered saline, pH 7.4, 150mM NaCl, 0.02% sodium azide, 0.4-0.5 mg/ml BSA and 50% glycerol.	
Immunogen	A synthesized peptide derived from human p16 ARC	
Concentration	500 ug/ml	
Purification	Affinity-chromatography	
Observed MW	16 kDa	
Dilution Ratios	Western blot (WB): 1:500-2000 Immunohistochemistry (IHC): 1:50-200 Immunocytochemistry/Immunofluorescence (ICC/IF): 1:50-200 ImmunoPrecipitation (IP): 1:20 Flow Cytometry (FCM): 1:20	

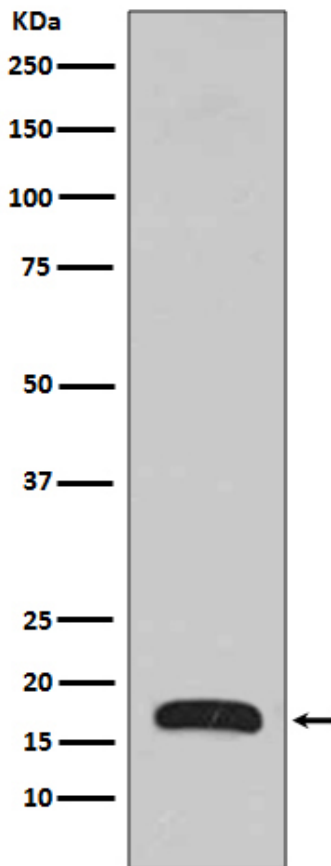
Storage

12 months from date of receipt, -20°C as supplied.

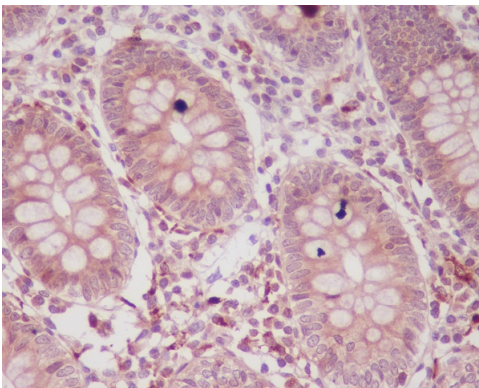
Reference

Anti-ARPC5 Antibody (Clone#CCD-1)被引用在1文献中。

Selected Validation Data



Western blot analysis of p16 Arc expression in Human fetal brain lysate.



Immunohistochemical analysis of paraffin-embedded human colon, using p16 ARC Antibody.