

## Basic Information

<b>Product Name</b>	Anti-Cytokeratin 20/KRT20 Antibody (Clone#CDI-11)	
<b>Gene Name</b>	KRT20	
<b>Source</b>	Rabbit	
<b>Clonality</b>	Monoclonal	
<b>Isotype</b>	IgG	
<b>Species Reactivity</b>	human, rat	
<b>Tested Application</b>	WB, IHC, ICC/IF, IP, FCM	
<b>Contents</b>	500 ug/ml; Rabbit IgG in phosphate buffered saline, pH 7.4, 150mM NaCl, 0.02% sodium azide, 0.4-0.5 mg/ml BSA and 50% glycerol.	
<b>Immunogen</b>	A synthesized peptide derived from human Cytokeratin 20	
<b>Concentration</b>	500 ug/ml	
<b>Purification</b>	Affinity-chromatography	
<b>Observed MW</b>	48 kDa	
<b>Dilution Ratios</b>	Western blot (WB):	1:500-2000
	Immunohistochemistry (IHC):	1:50-200
	Immunocytochemistry/Immunofluorescence (ICC/IF):	1:50-200
	ImmunoPrecipitation (IP):	1:30
	Flow Cytometry (FCM):	1:50

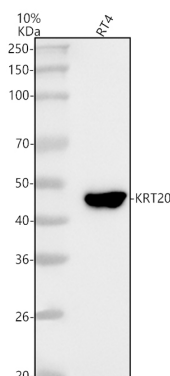
## Storage

12 months from date of receipt, -20°C as supplied.

## Background Information

Keratin 20, often abbreviated CK20, is a protein that in humans is encoded by the KRT20 gene. This gene encodes a member of the keratin protein family and is found within a cluster of cytokeratin genes on chromosome 11. Keratins are cytoskeletal proteins that are preferentially expressed in epithelial cells. The encoded protein may help maintain intermediate filament organization in intestinal epithelium. Phosphorylation of this protein may also influence mucin secretion in the small intestine.

## Selected Validation Data

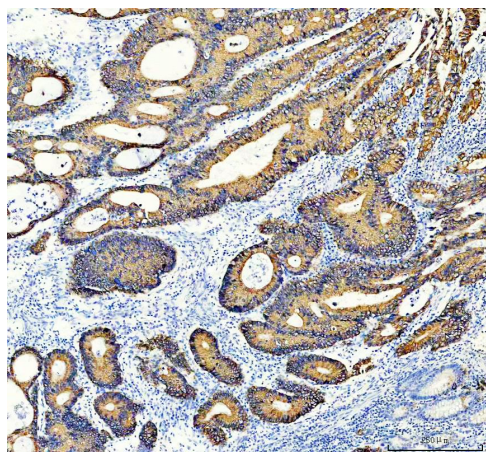


Western blot analysis of anti-Cytokeratin 20/KRT20 antibody (BM4207).

The sample well of each lane was loaded with 30 ug of sample under reducing conditions.

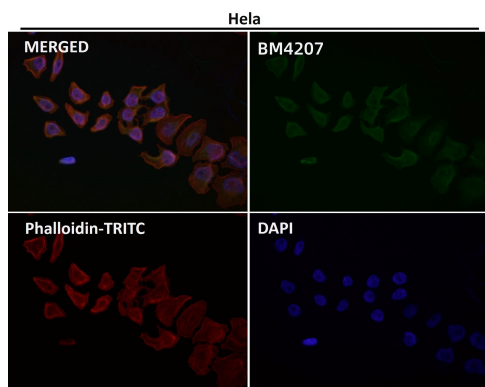
Lane 1: human RT4 whole cell lysates.

After electrophoresis, proteins were transferred to a membrane. Then the membrane was incubated with rabbit anti-Cytokeratin 20/KRT20 antigen affinity purified monoclonal antibody (BM4207) at a dilution of 1:1000 and probed with a goat anti-rabbit IgG-HRP secondary antibody (Catalog # BA1054). The signal is developed using ECL Plus Western Blotting Substrate (Catalog # AR1197). A specific band was detected for Cytokeratin 20/KRT20 at approximately 48 kDa. The expected band size for Cytokeratin 20/KRT20 is at 48 kDa.



IHC analysis of Cytokeratin 20/KRT20 using anti-Cytokeratin 20/KRT20 antibody (BM4207) .

Cytokeratin 20/KRT20 was detected in a paraffin-embedded section of human colon cancer tissue. The tissue section was incubated with rabbit anti-Cytokeratin 20/KRT20 Antibody (BM4207) at a dilution of 1:200 and developed using HRP Conjugated Rabbit IgG Super Vision Assay Kit (Catalog # SV0002) with DAB (Catalog # AR1027) as the chromogen.



Immunofluorescent analysis using the Antibody.

Product datasheet

**Anti-Cytokeratin 20/KRT20 Antibody  
(Clone#CDI-11)**

**Catalog Number: BM4207**



antibody and ELISA experts

**BOSTER BIOLOGICAL TECHNOLOGY**

Building C21, 3rd to 5th Floors, Optics Valley Biopharmaceutical Accelerator,  
East Lake High-Tech Development Zone, Wuhan.

**Web:** [www.boster.com](http://www.boster.com) **Phone:** 027-67845390/1/2 **Email:** [boster@boster.com](mailto:boster@boster.com)