

## Basic Information

Product Name	Anti-CD90/THY1 Antibody (Clone#CEB-20)		
Gene Name	THY1		
Source	Rabbit		
Clonality	Monoclonal		
Isotype	IgG		
Species Reactivity	human, rat		
Tested Application	WB, IHC		
Contents	500 ug/ml; Rabbit IgG in phosphate buffered saline, pH 7.4, 150mM NaCl, 0.02% sodium azide, 0.4-0.5 mg/ml BSA and 50% glycerol.		
Immunogen	A synthesized peptide derived from human CD90 / Thy1		
Concentration	500 ug/ml		
Purification	Affinity-chromatography		
Observed MW	22-30 kDa		
Dilution Ratios	Western blot (WB): 1:500-2000 Immunohistochemistry (IHC):1:50-200		

## Storage

12 months from date of receipt, -20°C as supplied.

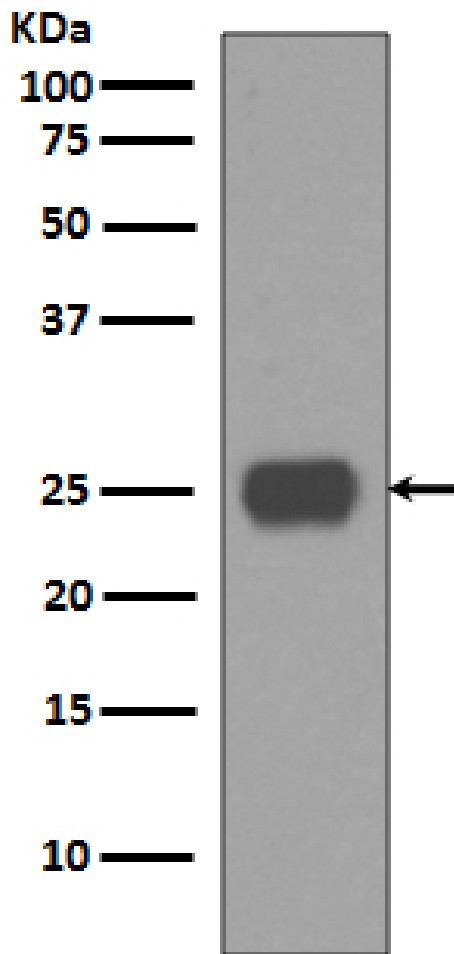
## Background Information

CD90(Cluster of Differentiation 90) or Thy-1 is a 25-37 kDa heavily N-glycosylated, glycoposphatidylinositol(GPI) anchored conserved cell surface protein with a single V-like immunoglobulin domain, originally discovered as a thymocyte antigen. The CD90 gene is mapped to 11q23.3. Thy-1 can be used as a marker for a variety of stem cells and for the axonal processes of mature neurons. Structural study of Thy-1 lead to the foundation of the Immunoglobulin superfamily, of which it is the smallest member, and led to the first biochemical description and characterization of a vertebrate GPI anchor.

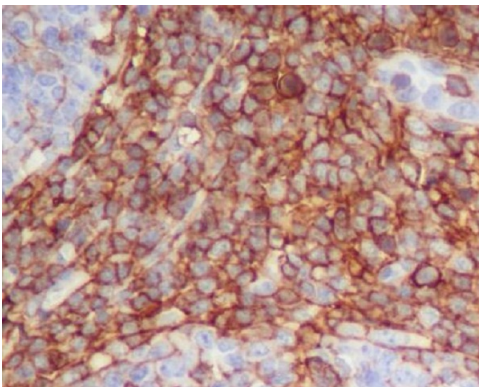
## Reference

Anti-CD90/THY1 Antibody (Clone#CEB-20)被引用在1文献中。

## Selected Validation Data



Western blot analysis of CD90 expression in Human fetal brain lysate.



Immunohistochemical analysis of paraffin-embedded human tonsil, using CD90 / Thy1 Antibody.

Product datasheet

**Anti-CD90/THY1 Antibody  
(Clone#CEB-20)**

**Catalog Number: BM4210**



antibody and ELISA experts

**BOSTER BIOLOGICAL TECHNOLOGY**

Building C21, 3rd to 5th Floors, Optics Valley Biopharmaceutical Accelerator,  
East Lake High-Tech Development Zone, Wuhan.

**Web:** [www.boster.com](http://www.boster.com) **Phone:** 027-67845390/1/2 **Email:** [boster@boster.com](mailto:boster@boster.com)