

## Basic Information

Product Name	Anti-CCR7 Antibody (Clone#CFO-3)	
Gene Name	CCR7	
Source	Rabbit	
Clonality	Monoclonal	
Isotype	IgG	
Species Reactivity	human, mouse, rat	
Tested Application	WB, IHC, ICC/IF, IP	
Contents	500 ug/ml; Rabbit IgG in phosphate buffered saline, pH 7.4, 150mM NaCl, 0.02% sodium azide, 0.4-0.5 mg/ml BSA and 50% glycerol.	
Immunogen	A synthesized peptide derived from human CCR7	
Concentration	500ug/ml	
Purification	Affinity-chromatography	
Observed MW	43 kDa	
Dilution Ratios	Western blot (WB): 1:500-2000 Immunohistochemistry (IHC): 1:50-200 Immunocytochemistry/Immunofluorescence (ICC/IF): 1:50-200 ImmunoPrecipitation (IP): 1:20	

## Storage

12 months from date of receipt, -20°C as supplied.

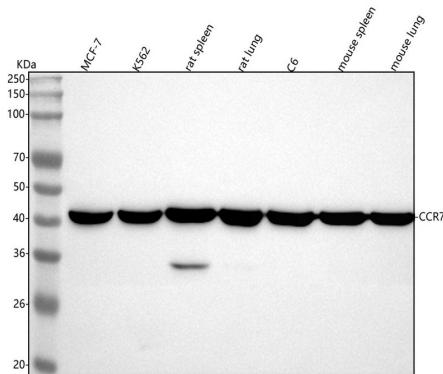
## Background Information

The protein encoded by this gene is a member of the G protein-coupled receptor family. This receptor was identified as a gene induced by the Epstein-Barr virus (EBV), and is thought to be a mediator of EBV effects on B lymphocytes. This receptor is expressed in various lymphoid tissues and activates B and T lymphocytes. It has been shown to control the migration of memory T cells to inflamed tissues, as well as stimulate dendritic cell maturation. The chemokine (C-C motif) ligand 19 (CCL19/ECL) has been reported to be a specific ligand of this receptor.

## Reference

Anti-CCR7 Antibody (Clone#CFO-3)被引用在5文献中。

## Selected Validation Data



Western blot analysis of anti-CCR7 antibody (BM4218). The sample well of each lane was loaded with 30 ug of sample under reducing conditions.

Lane 1: human MCF-7 whole cell lysates,

Lane 2: human K562 whole cell lysates,

Lane 3: rat spleen tissue lysates,

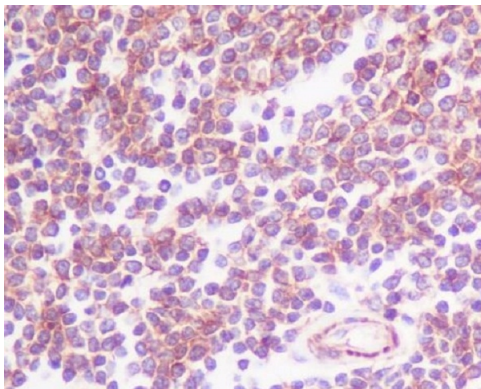
Lane 4: rat lung tissue lysates,

Lane 5: rat C6 whole cell lysates,

Lane 6: mouse spleen tissue lysates,

Lane 7: mouse lung tissue lysates.

After electrophoresis, proteins were transferred to a membrane. Then the membrane was incubated with rabbit anti-CCR7 antigen affinity purified monoclonal antibody (BM4218) at a dilution of 1:1000 and probed with a goat anti-rabbit IgG-HRP secondary antibody (Catalog # BA1054). The signal is developed using ECL Plus Western Blotting Substrate (Catalog # AR1197). A specific band was detected for CCR7 at approximately 43 kDa. The expected band size for CCR7 is at 43 kDa.



Immunohistochemical analysis of paraffin-embedded human spleen, using CCR7 Antibody.

Product datasheet

**Anti-CCR7 Antibody (Clone#CFO-3)**

**Catalog Number: BM4218**

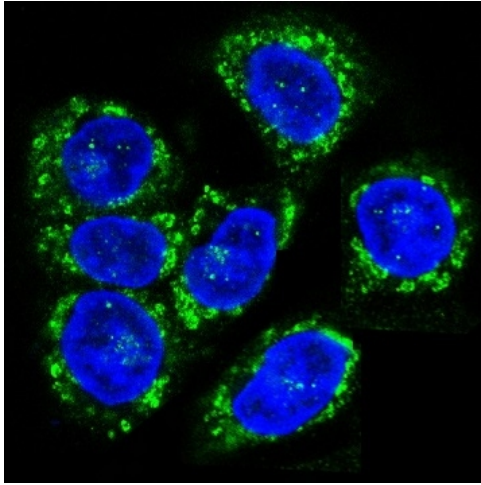


antibody and ELISA experts

**BOSTER BIOLOGICAL TECHNOLOGY**

Building C21, 3rd to 5th Floors, Optics Valley Biopharmaceutical Accelerator,  
East Lake High-Tech Development Zone, Wuhan.

**Web:** [www.boster.com](http://www.boster.com) **Phone:** 027-67845390/1/2 **Email:** [boster@boster.com](mailto:boster@boster.com)



Immunofluorescent analysis of HeLa cells, using CCR7 Antibody.