

Basic Information

Product Name	Anti-CD326/EPCAM Antibody (Clone#CIB-5)	
Gene Name	EPCAM	
Source	Rabbit	
Clonality	Monoclonal	
Isotype	IgG	
Species Reactivity	human, mouse, rat	
Tested Application	WB, IHC, ICC/IF	
Contents	500 ug/ml; Rabbit IgG in phosphate buffered saline, pH 7.4, 150mM NaCl, 0.02% sodium azide, 0.4-0.5 mg/ml BSA and 50% glycerol.	
Immunogen	A synthesized peptide derived from human EpCAM	
Concentration	500 ug/ml	
Purification	Affinity-chromatography	
Observed MW	35-40 kDa	
Dilution Ratios	Western blot (WB):	1:500-2000
	Immunohistochemistry (IHC):	1:50-200
	Immunocytochemistry/Immunofluorescence (ICC/IF):	1:50-200

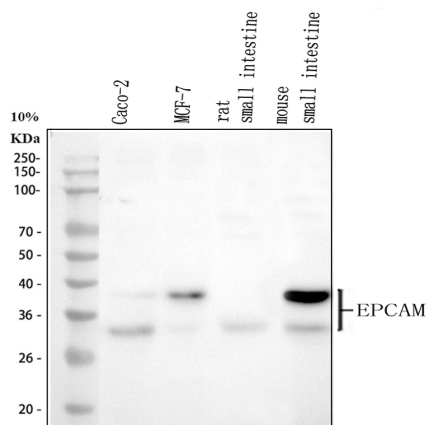
Storage

12 months from date of receipt, -20°C as supplied.

Background Information

Epithelial cell adhesion molecule (EpcAM) is a transmembrane glycoprotein mediating Ca²⁺-independent homotypic cell-cell adhesion in epithelia. This gene encodes a carcinoma-associated antigen and is a member of a family that includes at least two type I membrane proteins. This antigen is expressed on most normal epithelial cells and gastrointestinal carcinomas and functions as a homotypic calcium-independent cell adhesion molecule. The antigen is being used as a target for immunotherapy treatment of human carcinomas. Mutations in this gene result in congenital tufting enteropathy.

Selected Validation Data



Western blot analysis of anti-CD326/EPCAM antibody (BM4250). The sample well of each lane was loaded with 30 ug of sample under reducing conditions.

Lane 1: human Caco-2 whole cell lysates,

Lane 2: human MCF-7 whole cell lysates,

Lane 3: rat small intestine tissue lysates,

Lane 4: mouse small intestine tissue lysates.

After electrophoresis, proteins were transferred to a membrane.

Then the membrane was incubated with rabbit anti-CD326/EPCAM antigen affinity purified monoclonal antibody (BM4250) at a dilution of 1:1000 and probed with a goat anti-rabbit IgG-HRP secondary antibody (Catalog # BA1054). The signal is developed using ECL Plus Western Blotting Substrate (Catalog # AR1197). A specific band was detected for CD326/EPCAM at approximately 35-40 kDa. The expected band size for CD326/EPCAM is at 35 kDa.



IHC analysis of CD326/EPCAM using anti-CD326/EPCAM antibody (BM4250) .

CD326/EPCAM was detected in a paraffin-embedded section of human breast tissue. The tissue section was incubated with rabbit anti-CD326/EPCAM Antibody (BM4250) at a dilution of 1:200 and developed using HRP Conjugated Rabbit IgG Super Vision Assay Kit (Catalog # SV0002) with DAB (Catalog # AR1027) as the chromogen.

Product datasheet

**Anti-CD326/EPCAM Antibody
(Clone#CIB-5)**

Catalog Number: BM4250

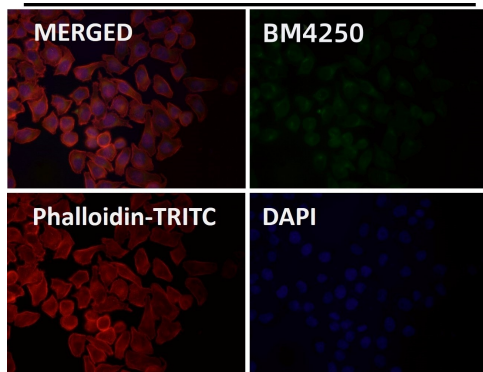
BOSTER[®]

antibody and ELISA experts

BOSTER BIOLOGICAL TECHNOLOGY

Building C21, 3rd to 5th Floors, Optics Valley Biopharmaceutical Accelerator,
East Lake High-Tech Development Zone, Wuhan.

Web: www.boster.com **Phone:** 027-67845390/1/2 **Email:** boster@boster.com



Immunofluorescent analysis using the Antibody.