

Basic Information

Product Name	Anti-Cytokeratin 8/KRT8 Antibody (Clone#CIG-11)	
Gene Name	KRT8	
Source	Rabbit	
Clonality	Monoclonal	
Isotype	IgG	
Species Reactivity	human, mouse	
Tested Application	WB, IHC, ICC/IF, IP, FCM	
Contents	500 ug/ml; Rabbit IgG in phosphate buffered saline, pH 7.4, 150mM NaCl, 0.02% sodium azide, 0.4-0.5 mg/ml BSA and 50% glycerol.	
Immunogen	A synthesized peptide derived from human Cytokeratin 8	
Concentration	500 ug/ml	
Purification	Affinity-chromatography	
Observed MW	54 kDa	
Dilution Ratios	Western blot (WB):	1:1000-5000
	Immunohistochemistry (IHC):	1:50-200
	Immunocytochemistry/Immunofluorescence (ICC/IF):	1:50-200
	ImmunoPrecipitation (IP):	1:20
	Flow Cytometry (FCM):	1:20

Storage

12 months from date of receipt, -20°C as supplied.

Background Information

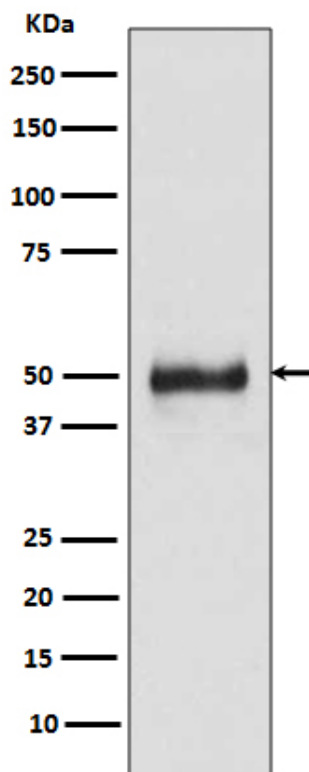
Keratin, type II cytoskeletal 8, also known as Cytokeratin-8 (CK-8) or keratin-8 (K8) is a keratin protein that is encoded in humans by the KRT8 gene. This gene is a member of the type II keratin family clustered on the long arm of chromosome 12. Type I and type II keratins heteropolymerize to form intermediate-sized filaments in the cytoplasm of epithelial cells. The product of this gene typically dimerizes with keratin 18 to form an intermediate filament in simple single-layered epithelial cells. This protein plays a role in maintaining cellular structural integrity and also functions in signal transduction and cellular differentiation. Mutations in this gene cause cryptogenic cirrhosis. Alternatively spliced transcript variants have been found for this gene.

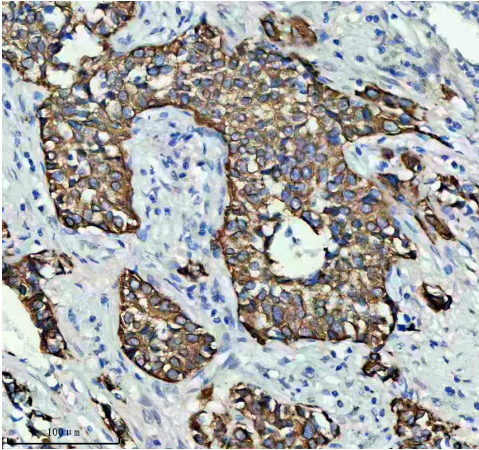
Reference

Anti-Cytokeratin 8/KRT8 Antibody (Clone#CIG-11)被引用在1文献中。

Selected Validation Data

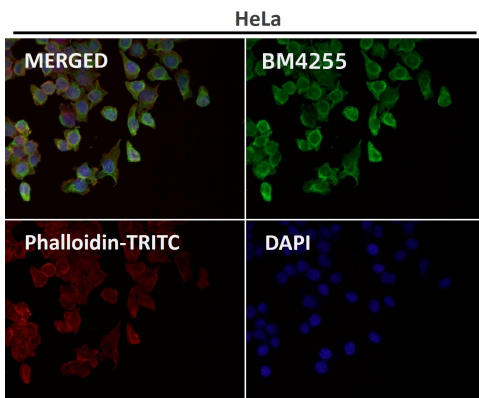
Western blot analysis of Cytokeratin 8 expression in HaCaT cell lysate.



**Anti-Cytokeratin 8/KRT8 Antibody
(Clone#CIG-11)****Catalog Number: BM4255**

IHC analysis of Cytokeratin 8/KRT8 using anti-Cytokeratin 8/KRT8 antibody (BM4255) .

Cytokeratin 8/KRT8 was detected in a paraffin-embedded section of human lung cancer tissue. The tissue section was incubated with rabbit anti-Cytokeratin 8/KRT8 Antibody (BM4255) at a dilution of 1:200 and developed using HRP Conjugated Rabbit IgG Super Vision Assay Kit (Catalog # SV0002) with DAB (Catalog # AR1027) as the chromogen.



Immunofluorescent analysis using the Antibody.