

Basic Information

Product Name	Anti-VEGFR2/KDR Antibody (Clone#CIH-11)
Gene Name	KDR
Source	Rabbit
Clonality	Monoclonal
Isotype	IgG
Species Reactivity	human
Tested Application	WB, IP
Contents	500 ug/ml; Rabbit IgG in phosphate buffered saline, pH 7.4, 150mM NaCl, 0.02% sodium azide, 0.4-0.5 mg/ml BSA and 50% glycerol.
Immunogen	A synthesized peptide derived from human VEGF Receptor 2
Concentration	500 ug/ml
Purification	Affinity-chromatography
Observed MW	180-250 kDa
Dilution Ratios	Western blot (WB): 1:500-2000 ImmunoPrecipitation (IP):1:20

Storage

12 months from date of receipt, -20°C as supplied.

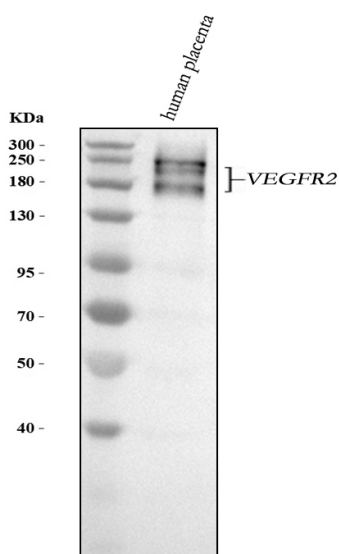
Background Information

KDR (Kinase Insert Domain Receptor), also known as FLK1, VEGFR or VEGFR2, is a VEGF receptor. KDR is the human gene encoding it. Sait et al. (1995) likewise corrected the assignment to chromosome 4q11-q12 to the same region occupied also by PDGFRA and KIT, thus indicating the location of a cluster of receptor tyrosine kinase genes. Vascular endothelial growth factor (VEGF) is the only mitogen that specifically acts on endothelial cells. Its expression is upregulated by hypoxia, and its cell-surface receptor, known as fetal liver kinase-1 (Flk1) in mouse, is exclusively expressed in endothelial cells (Plate et al., 1993). Flk1 is the mouse homolog of KDR (Matthews et al., 1991).

Reference

Anti-VEGFR2/KDR Antibody (Clone#CIH-11)被引用在2文献中。

Selected Validation Data



Western blot analysis of anti-VEGFR2/KDR antibody (BM4256). The sample well of each lane was loaded with 30 ug of sample under reducing conditions.

Lane 1: human placenta tissue lysates.

After electrophoresis, proteins were transferred to a membrane. Then the membrane was incubated with rabbit anti-VEGFR2/KDR antigen affinity purified monoclonal antibody (BM4256) at a dilution of 1:1000 and probed with a goat anti-rabbit IgG-HRP secondary antibody (Catalog # BA1054). The signal is developed using ECL Plus Western Blotting Substrate (Catalog # AR1197). A specific band was detected for VEGFR2/KDR at approximately 180-250 kDa. The expected band size for VEGFR2/KDR is at 152 kDa.