

Basic Information

Product Name	Anti-Cytokeratin 15/KRT15 Antibody (Clone#DOB-11)	
Gene Name	KRT15	
Source	Rabbit	
Clonality	Monoclonal	
Isotype	IgG	
Species Reactivity	human, mouse	
Tested Application	WB, IHC, ICC/IF, FCM	
Contents	500 ug/ml; Rabbit IgG in phosphate buffered saline, pH 7.4, 150mM NaCl, 0.02% sodium azide, 0.4-0.5 mg/ml BSA and 50% glycerol.	
Immunogen	A synthesized peptide derived from human Cytokeratin 15	
Concentration	500 ug/ml	
Purification	Affinity-chromatography	
Observed MW	45 kDa	
Dilution Ratios	Western blot (WB):	1:500-2000
	Immunohistochemistry (IHC):	1:50-200
	Immunocytochemistry/Immunofluorescence (ICC/IF):	1:50-200
	Flow Cytometry (FCM):	1:20

Storage

12 months from date of receipt, -20°C as supplied.

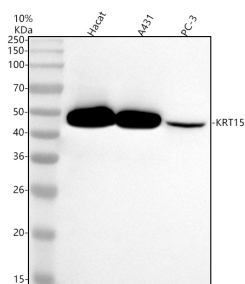
Background Information

Keratins are a large family of proteins that form the intermediate filament cytoskeleton of epithelial cells, which are classified into two major sequence types. Type I keratins are a group of acidic intermediate filament proteins, including K9-K23, and the hair keratins Ha1-Ha8. Type II keratins are the basic or neutral counterparts to the acidic type I keratins, including K1-K8, and the hair keratins, Hb1-Hb6. Keratin 15 is a type I cytokeratin. It is found in some progenitor basal cells within complex epithelia.

Reference

Anti-Cytokeratin 15/KRT15 Antibody (Clone#DOB-11)被引用在2文献中。

Selected Validation Data



Western blot analysis of anti-KRT15 antibody (BM4260). The sample well of each lane was loaded with 30 ug of sample under reducing conditions.

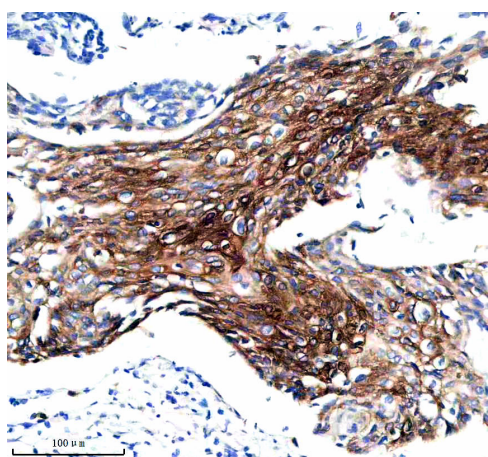
Lane 1: human Haca whole cell lysates,

Lane 2: human A431 whole cell lysates,

Lane 3: human PC-3 whole cell lysates.

After electrophoresis, proteins were transferred to a membrane.

Then the membrane was incubated with rabbit anti-KRT15 antigen affinity purified monoclonal antibody (BM4260) at a dilution of 1:1000 and probed with a goat anti-rabbit IgG-HRP secondary antibody (Catalog # BA1054). The signal is developed using ECL Plus Western Blotting Substrate (Catalog # AR1197). A specific band was detected for KRT15 at approximately 45 kDa. The expected band size for KRT15 is at 49 kDa.



IHC analysis of KRT15 using anti-KRT15 antibody (BM4260) .

KRT15 was detected in a paraffin-embedded section of human cervical cancer tissue. The tissue section was incubated with rabbit anti-KRT15 Antibody (BM4260) at a dilution of 1:200 and developed using HRP Conjugated Rabbit IgG Super Vision Assay Kit (Catalog # SV0002) with DAB (Catalog # AR1027) as the chromogen.