

Basic Information

Product Name	Anti-PKC Beta/PRKCB Antibody (Clone#DOC-16)	
Gene Name	PRKCB	
Source	Rabbit	
Clonality	Monoclonal	
Isotype	IgG	
Species Reactivity	human, mouse, rat	
Tested Application	WB, IHC, ICC/IF, IP, FCM	
Contents	500 ug/ml; Rabbit IgG in phosphate buffered saline, pH 7.4, 150mM NaCl, 0.02% sodium azide, 0.4-0.5 mg/ml BSA and 50% glycerol.	
Immunogen	A synthesized peptide derived from human PKC beta 2	
Concentration	500 ug/ml	
Purification	Affinity-chromatography	
Observed MW	77 kDa	
Dilution Ratios	Western blot (WB):	1:500-2000
	Immunohistochemistry (IHC):	1:50-200
	Immunocytochemistry/Immunofluorescence (ICC/IF):	1:50-200
	ImmunoPrecipitation (IP):	1:50
	Flow Cytometry (FCM):	1:50

Storage

12 months from date of receipt, -20°C as supplied.

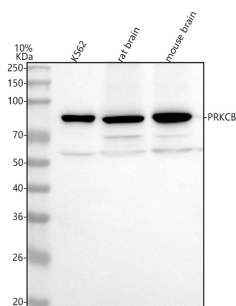
Background Information

Protein kinase C beta type is an enzyme that in humans is encoded by the PRKCB gene. It is a member of the protein kinase C (PKC) gene family. PKC family members phosphorylate a wide variety of protein targets and are known to be involved in diverse cellular signaling pathways. PKC family members also serve as major receptors for phorbol esters, a class of tumor promoters. This protein kinase has been reported to be involved in many different cellular functions, such as B cell activation, apoptosis induction, endothelial cell proliferation, and intestinal sugar absorption. It has been found that PRKCB activated by oxidative conditions in the cell, induces phosphorylation of p66(SHC) and triggers mitochondrial accumulation of the protein after it is recognized by the prolyl isomerase PIN1.

Reference

Anti-PKC Beta/PRKCB Antibody (Clone#DOC-16)被引用在2文献中。

Selected Validation Data



Western blot analysis of anti-PKC Beta/PRKCB antibody (BM4261).

The sample well of each lane was loaded with 30 ug of sample under reducing conditions.

Lane 1: human K562 whole cell lysates,

Lane 2: rat brain tissue lysates,

Lane 3: mouse brain tissue lysates.

After electrophoresis, proteins were transferred to a membrane.

Then the membrane was incubated with rabbit anti-PKC Beta/PRKCB antigen affinity purified monoclonal antibody (BM4261) at a dilution of 1:1000 and probed with a goat anti-rabbit IgG-HRP secondary antibody (Catalog # BA1054). The signal is developed using ECL Plus Western Blotting Substrate (Catalog # AR1197). A specific band was detected for PKC Beta/PRKCB at approximately 77 kDa. The expected band size for PKC Beta/PRKCB is at 77 kDa.