

Basic Information

Product Name	Anti-CD4 Antibody (Clone#DOE-3)	
Gene Name	CD4	
Source	Rabbit	
Clonality	Monoclonal	
Isotype	IgG	
Species Reactivity	human	
Tested Application	WB, IHC, ICC/IF, FCM	
Contents	500 ug/ml; Rabbit IgG in phosphate buffered saline, pH 7.4, 150mM NaCl, 0.02% sodium azide, 0.4-0.5 mg/ml BSA and 50% glycerol.	
Immunogen	A synthesized peptide derived from human CD4	
Concentration	500 ug/ml	
Purification	Affinity-chromatography	
Observed MW	52 kDa	
Dilution Ratios	Western blot (WB):	1:500-2000
	Immunohistochemistry (IHC):	1:50-200
	Immunocytochemistry/Immunofluorescence (ICC/IF):	1:50-200
	Flow Cytometry (FCM):	1:40

Storage

12 months from date of receipt, -20°C as supplied. 6 months 2 to 8°C after reconstitution. Avoid repeated freezing and thawing.

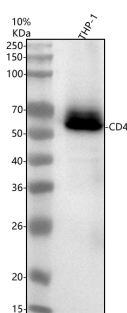
Background Information

This gene encodes a membrane glycoprotein of T lymphocytes that interacts with major histocompatibility complex class II antigens and is also a receptor for the human immunodeficiency virus. This gene is expressed not only in T lymphocytes, but also in B cells, macrophages, and granulocytes. It is also expressed in specific regions of the brain. The protein functions to initiate or augment the early phase of T-cell activation, and may function as an important mediator of indirect neuronal damage in infectious and immune-mediated diseases of the central nervous system. Multiple alternatively spliced transcript variants encoding different isoforms have been identified in this gene.

Reference

Anti-CD4 Antibody (Clone#DOE-3)被引用在7文献中。

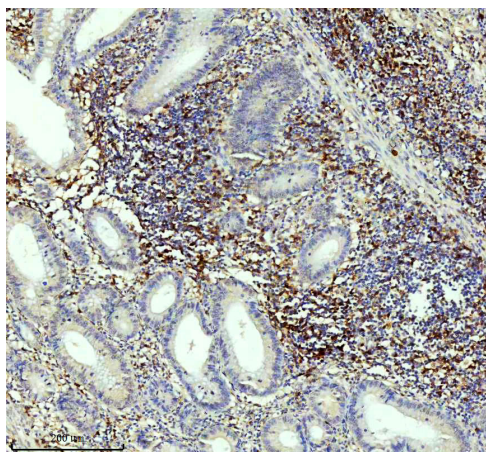
Selected Validation Data



Western blot analysis of anti-CD4 antibody (BM4263). The sample well of each lane was loaded with 30 ug of sample under reducing conditions.

Lane 1: human THP-1 whole cell lysates.

After electrophoresis, proteins were transferred to a membrane. Then the membrane was incubated with rabbit anti-CD4 antigen affinity purified monoclonal antibody (BM4263) at a dilution of 1:1000 and probed with a goat anti-rabbit IgG-HRP secondary antibody (Catalog # BA1054). The signal is developed using ECL Plus Western Blotting Substrate (Catalog # AR1197). A specific band was detected for CD4 at approximately 55 kDa. The expected band size for CD4 is at 51 kDa.



IHC analysis of CD4 using anti-CD4 antibody (BM4263) .

CD4 was detected in a paraffin-embedded section of human appendix tissue. The tissue section was incubated with rabbit anti-CD4 Antibody (BM4263) at a dilution of 1:200 and developed using HRP Conjugated Rabbit IgG Super Vision Assay Kit (Catalog # SV0002) with DAB (Catalog # AR1027) as the chromogen.