

## Basic Information

<b>Product Name</b>	Anti-Gamma Tubulin/TUBG1 Antibody (Clone#DAE-20)		
<b>Gene Name</b>	TUBG1		
<b>Source</b>	Rabbit		
<b>Clonality</b>	Monoclonal		
<b>Isotype</b>	IgG		
<b>Species Reactivity</b>	human, mouse, rat, monkey, zebrafish		
<b>Tested Application</b>	WB, IHC, ICC/IF, IP, FCM		
<b>Contents</b>	500 ug/ml; Rabbit IgG in phosphate buffered saline, pH 7.4, 150mM NaCl, 0.02% sodium azide, 0.4-0.5 mg/ml BSA and 50% glycerol.		
<b>Immunogen</b>	A synthesized peptide derived from human Tubulin gamma		
<b>Purification</b>	Affinity-chromatography		
<b>Observed MW</b>	48 kDa		
<b>Dilution Ratios</b>	Western blot (WB):	1:500-2000	
	Immunohistochemistry (IHC):	1:50-200	
	Immunocytochemistry/Immunofluorescence (ICC/IF):	1:50-200	
	ImmunoPrecipitation (IP):	1:50	
	Flow Cytometry (FCM):	1:50	

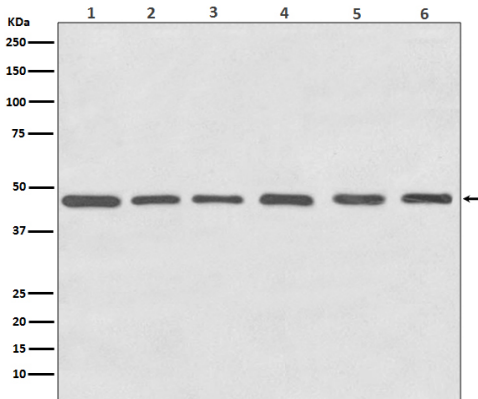
## Storage

12 months from date of receipt, -20°C as supplied.

## Selected Validation Data

# Anti-Gamma Tubulin/TUBG1 Antibody (Clone#DAE-20)

Catalog Number: **BM4273**



Western blot analysis of Tubulin gamma expression in (1) HeLa cell lysate; (2) NIH 3T3 cell lysate; (3) C6 cell lysate; (4) Zebrafish lysates; (5) COS-1 cell lysate; (6) MDCK cell lysate.