

Basic Information

Product Name	Anti-VCAM1 Antibody (Clone#DCA-22)	
Gene Name	VCAM1	
Source	Rabbit	
Clonality	Monoclonal	
Isotype	IgG	
Species Reactivity	human, mouse, rat	
Tested Application	WB, IHC, ICC/IF, IP, FCM	
Contents	500 ug/ml; Rabbit IgG in phosphate buffered saline, pH 7.4, 150mM NaCl, 0.02% sodium azide, 0.4-0.5 mg/ml BSA and 50% glycerol.	
Immunogen	A synthesized peptide derived from human VCAM1	
Concentration	500 ug/ml	
Purification	Affinity-chromatography	
Observed MW	110 kDa	
Dilution Ratios	Western blot (WB):	1:500-2000
	Immunohistochemistry (IHC):	1:50-200
	Immunocytochemistry/Immunofluorescence (ICC/IF):	1:50-200
	ImmunoPrecipitation (IP):	1:20
	Flow Cytometry (FCM):	1:50

Storage

12 months from date of receipt, -20°C as supplied.

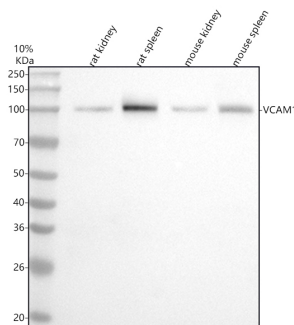
Background Information

CD106(cluster of differentiation 106) also known as vascular cell adhesion molecule 1(VCAM-1), is a protein that in humans is encoded by the VCAM1 gene. In inflammatory conditions and in cardiac allografts undergoing rejection, VCAM1 is upregulated in endothelium of postcapillary venules. Arterial expression of VCAM1 is also found in experimental models of atherosclerosis in the rabbit. This gene is mapped to chromosome 1 by Southern analysis of somatic cell hybrids. VCAM-1 functions as a cell adhesion molecule. The VCAM-1 protein mediates the adhesion of lymphocytes, monocytes, eosinophils, and basophils to vascularendothelium. It also functions in leukocyte-endothelial cell signal transduction, and it may play a role in the development of atherosclerosis and rheumatoid arthritis. CAM741 works similar to cotransin in that it represses the biosynthesis of VCAM1 cells by blocking the process of cotranslational translocation, which is dependent on the signal peptide of VCAM1. Among the lung metastasis signature genes identified, several, including VCAM1, were functionally validated.

Reference

Anti-VCAM1 Antibody (Clone#DCA-22)被引用在18文献中。

Selected Validation Data



Western blot analysis of anti-VCAM1 antibody (BM4289). The sample well of each lane was loaded with 30 ug of sample under reducing conditions.

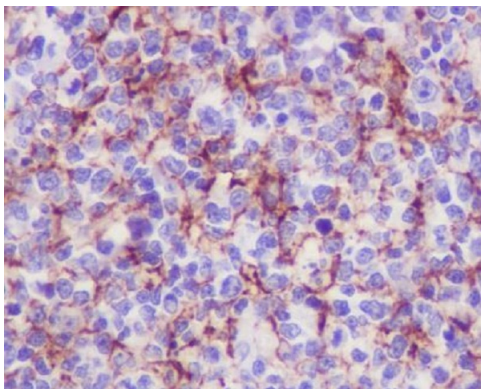
Lane 1: rat kidney tissue lysates,

Lane 2: rat spleen tissue lysates,

Lane 3: mouse kidney tissue lysates,

Lane 4: mouse spleen tissue lysates.

After electrophoresis, proteins were transferred to a membrane. Then the membrane was incubated with rabbit anti-VCAM1 antigen affinity purified monoclonal antibody (BM4289) at a dilution of 1:1000 and probed with a goat anti-rabbit IgG-HRP secondary antibody (Catalog # BA1054). The signal is developed using ECL Plus Western Blotting Substrate (Catalog # AR1197). A specific band was detected for VCAM1 at approximately 110 kDa. The expected band size for VCAM1 is at 81 kDa.



Immunohistochemical analysis of paraffin-embedded human tonsil, using VCAM1 Antibody.

Product datasheet

Anti-VCAM1 Antibody (Clone#DCA-22)

Catalog Number: BM4289

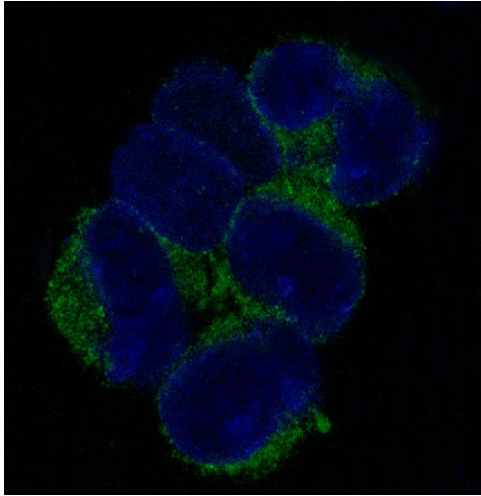


antibody and ELISA experts

BOSTER BIOLOGICAL TECHNOLOGY

Building C21, 3rd to 5th Floors, Optics Valley Biopharmaceutical Accelerator,
East Lake High-Tech Development Zone, Wuhan.

Web: www.boster.com **Phone:** 027-67845390/1/2 **Email:** boster@boster.com



Immunofluorescent analysis of K562 cells, using VCAM1 Antibody .