

## Basic Information

Product Name	Anti-Insulin/INS Antibody (Clone#DEA-9)		
Gene Name	INS		
Source	Rabbit		
Clonality	Monoclonal		
Isotype	IgG		
Species Reactivity	human, mouse, rat		
Tested Application	IHC, ICC/IF		
Contents	500 ug/ml; Rabbit IgG in phosphate buffered saline, pH 7.4, 150mM NaCl, 0.02% sodium azide, 0.4-0.5 mg/ml BSA and 50% glycerol.		
Immunogen	A synthesized peptide derived from human Insulin		
Concentration	500ug/ml		
Purification	Affinity-chromatography		
Dilution Ratios	Immunohistochemistry (IHC):		1:50-200
	Immunocytochemistry/Immunofluorescence (ICC/IF):		1:50-200

## Storage

12 months from date of receipt, -20°C as supplied.

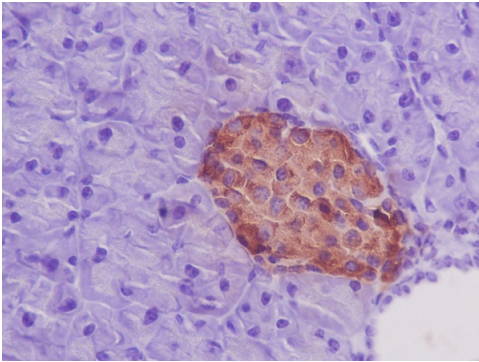
## Background Information

Insulin decreases blood glucose concentration. It increases cell permeability to monosaccharides, amino acids and fatty acids. It accelerates glycolysis, the pentose phosphate cycle, and glycogen synthesis in liver.

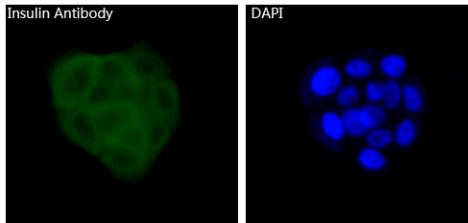
## Reference

Anti-Insulin/INS Antibody (Clone#DEA-9)被引用在21文献中。

## Selected Validation Data



Immunohistochemical analysis of paraffin-embedded mouse pancreas, using Insulin Antibody.



Immunofluorescent analysis of BxPC-3 cells, using Insulin Antibody .