

## Basic Information

Product Name	Anti-ERK1/2 Antibody (Clone#DFF-13)	
Gene Name	MAPK1/MAPK3	
Source	Rabbit	
Clonality	Monoclonal	
Isotype	IgG	
Species Reactivity	human, mouse, rat	
Tested Application	WB, ICC/IF, IP, FCM	
Contents	500 ug/ml; Rabbit IgG in phosphate buffered saline, pH 7.4, 150mM NaCl, 0.02% sodium azide, 0.4-0.5 mg/ml BSA and 50% glycerol.	
Immunogen	A synthesized peptide derived from human ERK1/2	
Concentration	500ug/ml	
Purification	Affinity-chromatography	
Observed MW	41 kDa	
Dilution Ratios	Western blot (WB): 1:500-2000 Immunocytochemistry/Immunofluorescence (ICC/IF):1:50-200 ImmunoPrecipitation (IP): 1:20 Flow Cytometry (FCM): 1:20	

## Storage

12 months from date of receipt, -20°C as supplied.

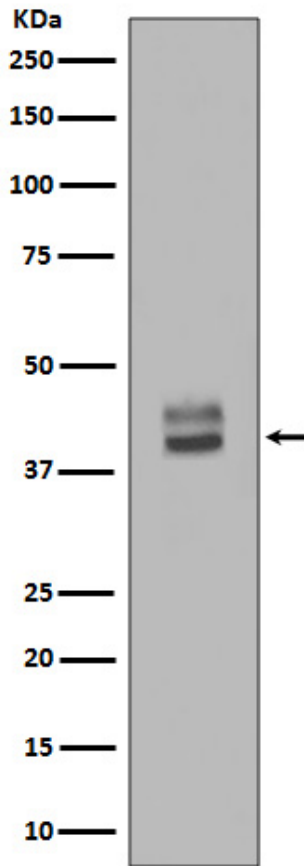
## Background Information

ERK1 p42 MAP kinase plays a critical role in the regulation of cell growth and differentiation. Activated by a wide variety of extracellular signals including growth and neurotrophic factors, cytokines, hormones and neurotransmitters. ERK2 p44 MAP kinase plays a critical role in the regulation of cell growth and differentiation. Acts as an integration point for multiple biochemical signals, and is involved in a wide variety of cellular processes such as proliferation, differentiation, transcription regulation and development.

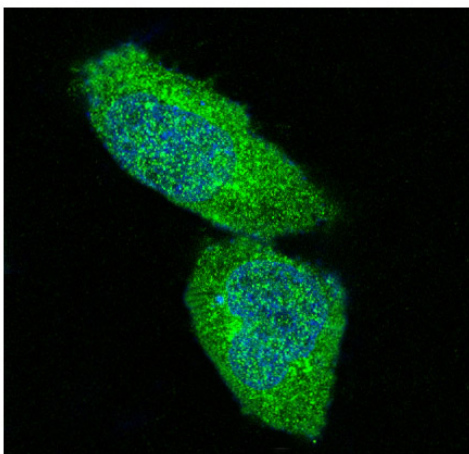
## Reference

Anti-ERK1/2 Antibody (Clone#DFF-13)被引用在42文献中。

## Selected Validation Data



Western blot analysis of ERK1/2 Antibody expression in HepG2 whole cell lysates.



Immunofluorescent analysis of Hela cells, using ERK1/2 Antibody.

Product datasheet

## Anti-ERK1/2 Antibody (Clone#DFF-13)

Catalog Number: **BM4326**



antibody and ELISA experts

**BOSTER BIOLOGICAL TECHNOLOGY**

Building C21, 3rd to 5th Floors, Optics Valley Biopharmaceutical Accelerator,  
East Lake High-Tech Development Zone, Wuhan.

**Web:** [www.boster.com](http://www.boster.com) **Phone:** 027-67845390/1/2 **Email:** [boster@boster.com](mailto:boster@boster.com)