

Basic Information

Product Name	Anti-Integrin Alpha 6/ITGA6 Antibody (Clone#DHG-9)		
Gene Name	ITGA6		
Source	Rabbit		
Clonality	Monoclonal		
Isotype	IgG		
Species Reactivity	human, mouse, rat		
Tested Application	WB, IHC, ICC/IF		
Contents	500 ug/ml; Rabbit IgG in phosphate buffered saline, pH 7.4, 150mM NaCl, 0.02% sodium azide, 0.4-0.5 mg/ml BSA and 50% glycerol.		
Immunogen	A synthesized peptide derived from human Integrin alpha 6		
Concentration	500 ug/ml		
Purification	Affinity-chromatography		
Observed MW	127 kDa		
Dilution Ratios	Western blot (WB):	1:500-2000	
	Immunohistochemistry (IHC):	1:50-200	
	Immunocytochemistry/Immunofluorescence (ICC/IF):	1:50-200	

Storage

12 months from date of receipt, -20°C as supplied.

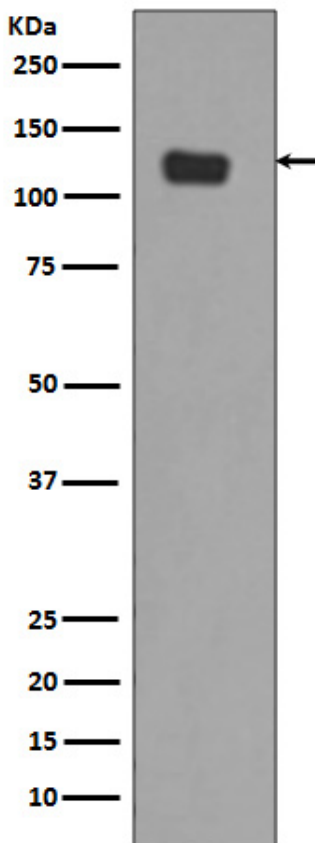
Background Information

Integrin alpha-6, also called VLA-6 or ITGA6B is a protein that in humans is encoded by the ITGA6 gene. This gene is mapped to 2q31.1. The ITGA6 protein product is the integrin alpha chain alpha 6. Integrins are integral cell-surface proteins composed of an alpha chain and a beta chain. A given chain may combine with multiple partners resulting in different integrins. For example, alpha 6 may combine with beta 4 in the integrin referred to as TSP180, or with beta 1 in the integrin VLA-6. Integrins are known to participate in cell adhesion as well as cell-surface mediated signalling. Integrin alpha-6/beta-1 is a receptor for laminin on platelets. Integrin alpha-6/beta-4 is a receptor for laminin in epithelial cells and it plays a critical structural role in the hemidesmosome.

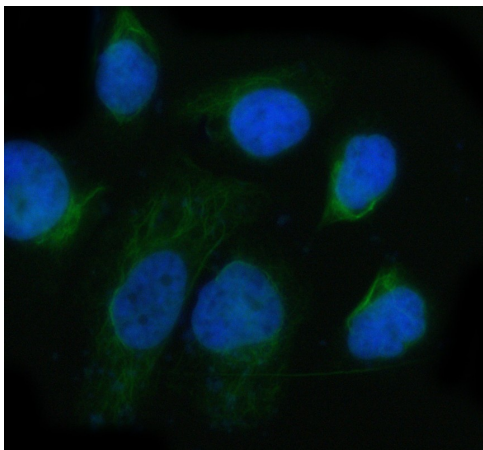
Reference

Anti-Integrin Alpha 6/ITGA6 Antibody (Clone#DHG-9)被引用在1文献中。

Selected Validation Data



Western blot analysis of Integrin alpha 6 expression in SW480 cell lysate.



IF analysis of Integrin Alpha 6/ITGA6 using anti-Integrin Alpha 6/ITGA6 antibody (BM4348).

Integrin Alpha 6/ITGA6 was detected in an immunocytochemical section of HeLa cells. The section was incubated with rabbit anti-Integrin Alpha 6/ITGA6 Antibody (BM4348) at a dilution of 1:100. DyLight®488 Conjugated Goat Anti-Rabbit IgG (Green) (Catalog # BA1127) was used as secondary antibody. The section was counterstained with DAPI (Catalog # AR1176) (Blue).

Product datasheet

**Anti-Integrin Alpha 6/ITGA6 Antibody
(Clone#DHG-9)**

Catalog Number: BM4348



antibody and ELISA experts

BOSTER BIOLOGICAL TECHNOLOGY

Building C21, 3rd to 5th Floors, Optics Valley Biopharmaceutical Accelerator,
East Lake High-Tech Development Zone, Wuhan.

Web: www.boster.com **Phone:** 027-67845390/1/2 **Email:** boster@boster.com