

Basic Information

Product Name	Anti-Cytokeratin 17/KRT17 Antibody (Clone#DIB-11)	
Gene Name	KRT17	
Source	Rabbit	
Clonality	Monoclonal	
Isotype	IgG	
Species Reactivity	human, mouse, rat	
Tested Application	WB, IHC, ICC/IF, FCM	
Contents	500 ug/ml; Rabbit IgG in phosphate buffered saline, pH 7.4, 150mM NaCl, 0.02% sodium azide, 0.4-0.5 mg/ml BSA and 50% glycerol.	
Immunogen	A synthesized peptide derived from human Cytokeratin 17	
Concentration	500 ug/ml	
Purification	Affinity-chromatography	
Observed MW	48 kDa	
Dilution Ratios	Western blot (WB):	1:500-2000
	Immunohistochemistry (IHC):	1:50-200
	Immunocytochemistry/Immunofluorescence (ICC/IF):	1:50-200
	Flow Cytometry (FCM):	1:30

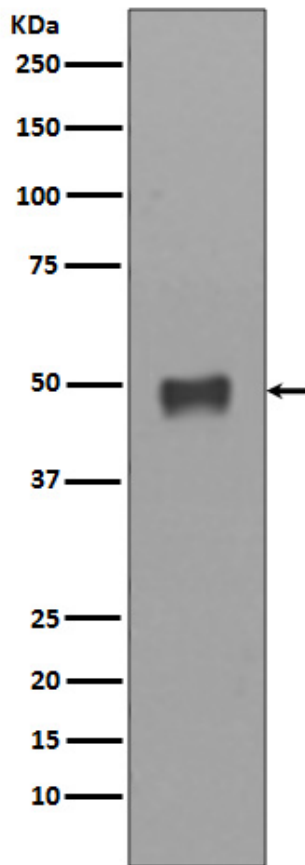
Storage

12 months from date of receipt, -20°C as supplied.

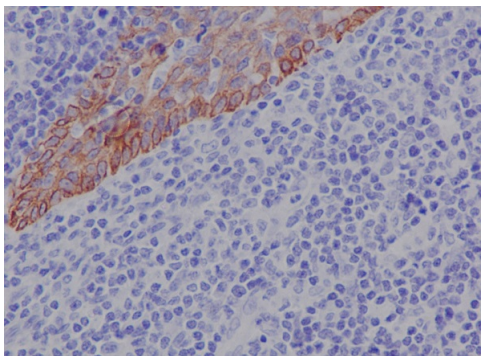
Background Information

Keratins are a large family of proteins that form the intermediate filament cytoskeleton of epithelial cells, which are classified into two major sequence types. Type I keratins are a group of acidic intermediate filament proteins, including K9-K23, and the hair keratins Ha1-Ha8. Type II keratins are the basic or neutral counterparts to the acidic type I keratins, including K1-K8, and the hair keratins, Hb1-Hb6. Keratin 17 is a type I cytokeratin. It is found in nail beds, hair follicles, sebaceous glands, and other epidermal appendages. It is used as a marker for trauma. This antibody is specifically against KRT17.

Selected Validation Data



Western blot analysis of Cytokeratin 17 expression in HACAT cell lysate.

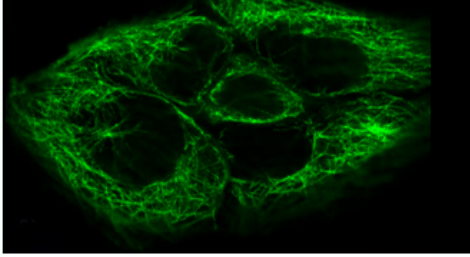


Immunohistochemical analysis of paraffin-embedded human tonsil, using Cytokeratin 17 Antibody.

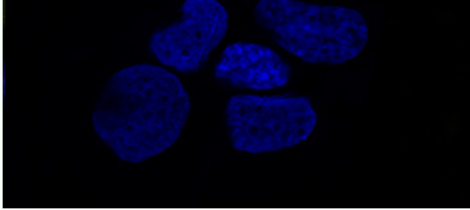
**Anti-Cytokeratin 17/KRT17 Antibody
(Clone#DIB-11)**

Catalog Number: BM4353

Cytokeratin 17 Antibody



DAPI



Immunofluorescent analysis of Hela cells, using Cytokeratin 17 Antibody .