

## Basic Information

<b>Product Name</b>	Anti-TOM20/TOMM20 Antibody (Clone#EOC-20)	
<b>Gene Name</b>	TOMM20	
<b>Source</b>	Rabbit	
<b>Clonality</b>	Monoclonal	
<b>Isotype</b>	IgG	
<b>Species Reactivity</b>	human, mouse, rat	
<b>Tested Application</b>	WB, IHC, ICC/IF, FCM	
<b>Contents</b>	500 ug/ml; Rabbit IgG in phosphate buffered saline, pH 7.4, 150mM NaCl, 0.02% sodium azide, 0.4-0.5 mg/ml BSA and 50% glycerol.	
<b>Immunogen</b>	A synthesized peptide derived from human TOMM20	
<b>Concentration</b>	500 ug/ml	
<b>Purification</b>	Affinity-chromatography	
<b>Observed MW</b>	16 kDa	
<b>Dilution Ratios</b>	Western blot (WB):	1:500-2000
	Immunohistochemistry (IHC):	1:50-200
	Immunocytochemistry/Immunofluorescence (ICC/IF):	1:50-200
	Flow Cytometry (FCM):	1:50

## Storage

12 months from date of receipt, -20°C as supplied.

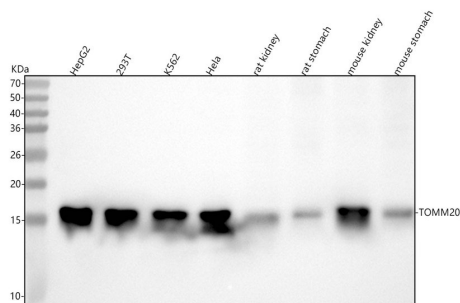
## Background Information

TOM20, also named as KIAA0016, belongs to the Tom20 family. It is a central component of the receptor complex responsible for the recognition and translocation of cytosolically synthesized mitochondrial preproteins. Together with TOM22, TOM20 functions as the transit peptide receptor at the surface of the mitochondrion outer membrane and facilitates the movement of preproteins into the TOM40 translocation pore. TOM20 is characterized as major docking receptors to mediate the recognition by different mechanisms.

## Reference

Anti-TOM20/TOMM20 Antibody (Clone#EOC-20)被引用在4文献中。

## Selected Validation Data



Western blot analysis of anti-TOM20/TOMM20 antibody (BM4366). The sample well of each lane was loaded with 30 ug of sample under reducing conditions.

Lane 1: human HepG2 whole cell lysates,

Lane 2: human 293T whole cell lysates,

Lane 3: human K562 whole cell lysates,

Lane 4: human Hela whole cell lysates,

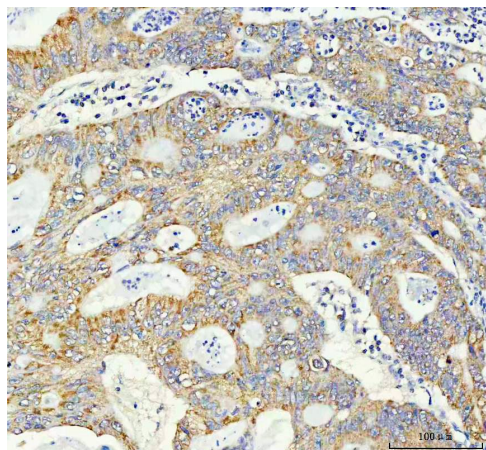
Lane 5: rat kidney tissue lysates,

Lane 6: rat stomach tissue lysates,

Lane 7: mouse kidney tissue lysates,

Lane 8: mouse stomach tissue lysates.

After electrophoresis, proteins were transferred to a membrane. Then the membrane was incubated with rabbit anti-TOM20/TOMM20 antigen affinity purified monoclonal antibody (BM4366) at a dilution of 1:1000 and probed with a goat anti-rabbit IgG-HRP secondary antibody (Catalog # BA1054). The signal is developed using ECL Plus Western Blotting Substrate (Catalog # AR1197). A specific band was detected for TOM20/TOMM20 at approximately 16 kDa. The expected band size for TOM20/TOMM20 is at 16 kDa.

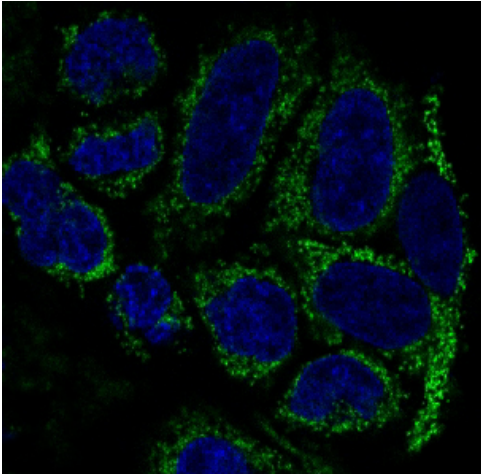


IHC analysis of TOM22/TOMM22 using anti-TOM22/TOMM22 antibody (BM4366) .

TOM22/TOMM22 was detected in a paraffin-embedded section of human colorectal adenocarcinoma tissue. The tissue section was incubated with rabbit anti-TOM22/TOMM22 Antibody (BM4366) at a dilution of 1:200 and developed using HRP Conjugated Rabbit IgG Super Vision Assay Kit (Catalog # SV0002) with DAB (Catalog # AR1027) as the chromogen.

**Anti-TOM20/TOMM20 Antibody  
(Clone#EOC-20)**

**Catalog Number: BM4366**



Immunofluorescent analysis of HeLa cells, using TOMM20 Antibody.