

Basic Information

Product Name	Anti-JNK1/2/3 (Phospho-T183+T183+T221) Antibody (Clone#EAG-13)	
Gene Name	MAPK8/MAPK9/MAPK10	
Source	Rabbit	
Clonality	Monoclonal	
Isotype	IgG	
Species Reactivity	human, mouse, rat	
Tested Application	WB, IHC, ICC/IF, IP, FCM	
Contents	500 ug/ml; Rabbit IgG in phosphate buffered saline, pH 7.4, 150mM NaCl, 0.02% sodium azide, 0.4-0.5 mg/ml BSA and 50% glycerol.	
Immunogen	A synthesized peptide derived from human Phospho-JNK1/2/3 (T183+T183+T221) Phospho-JNK1/2/3 (T183+T183+T221)	
Concentration	500 ug/ml	
Purification	Affinity-chromatography	
Observed MW	48 kDa	
Dilution Ratios	Western blot (WB): 1:500-2000 Immunohistochemistry (IHC): 1:50-200 Immunocytochemistry/Immunofluorescence (ICC/IF): 1:50-200 ImmunoPrecipitation (IP): 1:50 Flow Cytometry (FCM): 1:50	

Storage

12 months from date of receipt, -20°C as supplied.

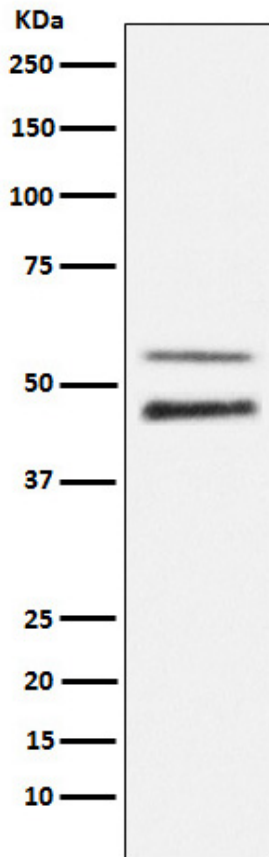
Background Information

ERK1 and ERK2 belongs to the protein kinase superfamily. It is involved in both the initiation and regulation of meiosis, mitosis, and postmitotic functions in differentiated cells by phosphorylating a number of transcription factors such as ELK-1. ERK1/2 catalized the reaction: ATP + a protein = ADP + a phosphoprotein. It is activated by tyrosine phosphorylation in response to INS and NGF. This antibody can recognize both ERK1 and ERK2 with the molecular mass of 38-44 kDa.

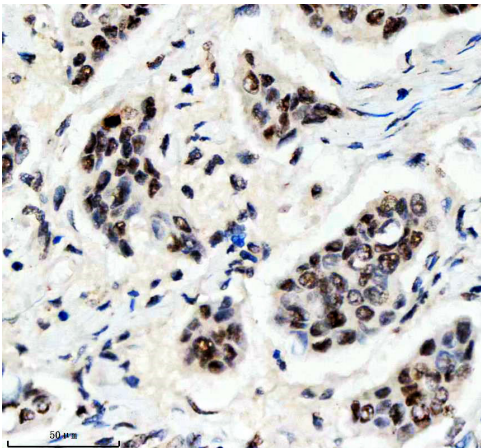
Reference

Anti-JNK1/2/3 (Phospho-T183+T221) Antibody (Clone#EAG-13)被引用在18文献中。

Selected Validation Data



Western blot analysis of JNK1/2/3 phosphorylation expression in NIH/3T3 cell lysate treated with Anisomycin.



IHC analysis of P-JNK1/2/3 using anti-P-JNK1/2/3 antibody (BM4380) . P-JNK1/2/3 was detected in a paraffin-embedded section of human breast cancer tissue. The tissue section was incubated with rabbit anti-P-JNK1/2/3 Antibody (BM4380) at a dilution of 1:200 and developed using HRP Conjugated Rabbit IgG Super Vision Assay Kit (Catalog # SV0002) with DAB (Catalog # AR1027) as the chromogen.

Product datasheet

Anti-JNK1/2/3 (Phospho-T183+T183+T221) Antibody (Clone#EAG-13)

Catalog Number: BM4380

BOSTER[®]

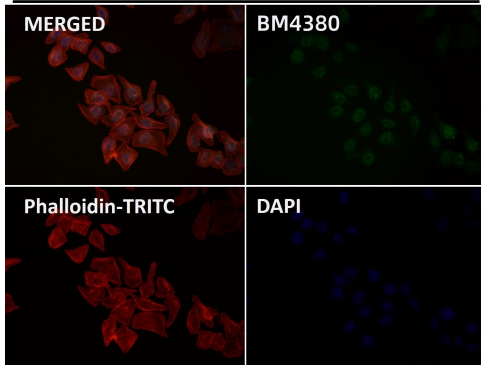
antibody and ELISA experts

BOSTER BIOLOGICAL TECHNOLOGY

Building C21, 3rd to 5th Floors, Optics Valley Biopharmaceutical Accelerator,
East Lake High-Tech Development Zone, Wuhan.

Web: www.boster.com **Phone:** 027-67845390/1/2 **Email:** boster@boster.com

Hela



Immunofluorescent analysis using the Antibody.