

Basic Information

Product Name	Anti-Lysozyme/LYZ Antibody (Clone#EBO-12)	
Gene Name	LYZ	
Source	Rabbit	
Clonality	Monoclonal	
Isotype	IgG	
Species Reactivity	human, mouse	
Tested Application	WB, IHC, ICC/IF	
Contents	500 ug/ml; Rabbit IgG in phosphate buffered saline, pH 7.4, 150mM NaCl, 0.02% sodium azide, 0.4-0.5 mg/ml BSA and 50% glycerol.	
Immunogen	A synthesized peptide derived from human Lysozyme	
Concentration	500 ug/ml	
Purification	Affinity-chromatography	
Observed MW	17 kDa	
Dilution Ratios	Western blot (WB):	1:1000-5000
	Immunohistochemistry (IHC):	1:50-200
	Immunocytochemistry/Immunofluorescence (ICC/IF):	1:50-200
	ImmunoPrecipitation (IP):	1:20

Storage

12 months from date of receipt, -20°C as supplied.

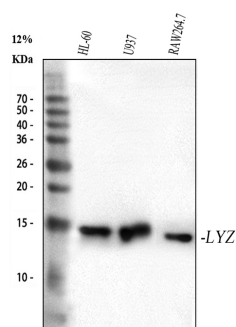
Background Information

In humans, the lysozyme enzyme is encoded by the LYZ gene. This gene encodes human lysozyme, whose natural substrate is the bacterial cell wall peptidoglycan (cleaving the beta [1-4] glycosidic linkages between N-acetylmuramic acid and N-acetylglucosamine). Lysozyme is one of the antimicrobial agents found in human milk, and is also present in spleen, lung, kidney, white blood cells, plasma, saliva, and tears. The protein has antibacterial activity against a number of bacterial species. Missense mutations in this gene have been identified in heritable renal amyloidosis.

Reference

Anti-Lysozyme/LYZ Antibody (Clone#EBO-12)被引用在2文献中。

Selected Validation Data



Western blot analysis of anti-Lysozyme/LYZ antibody (BM4383). The sample well of each lane was loaded with 30 ug of sample under reducing conditions.

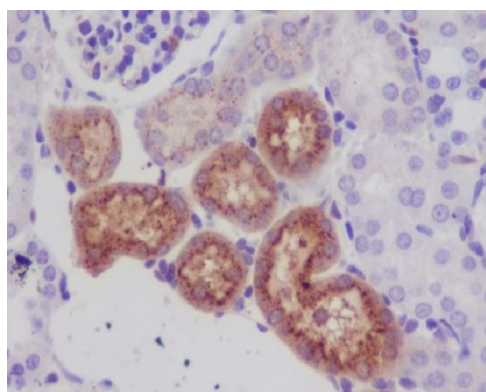
Lane 1: human HL-60 whole cell lysates,

Lane 2: human U937 whole cell lysates,

Lane 3: human RAW264.7 whole cell lysates.

After electrophoresis, proteins were transferred to a membrane.

Then the membrane was incubated with rabbit anti-Lysozyme/LYZ antigen affinity purified monoclonal antibody (BM4383) and probed with a goat anti-rabbit IgG-HRP secondary antibody (Catalog # BA1054). The signal is developed using ECL Plus Western Blotting Substrate (Catalog # AR1197). A specific band was detected for Lysozyme/LYZ at approximately 15 kDa. The expected band size for Lysozyme/LYZ is at 17 kDa.



Immunohistochemical analysis of paraffin-embedded mouse kidney, using Lysozyme Antibody.

Product datasheet

**Anti-Lysozyme/LYZ Antibody
(Clone#EBO-12)**

Catalog Number: BM4383

BOSTER[®]

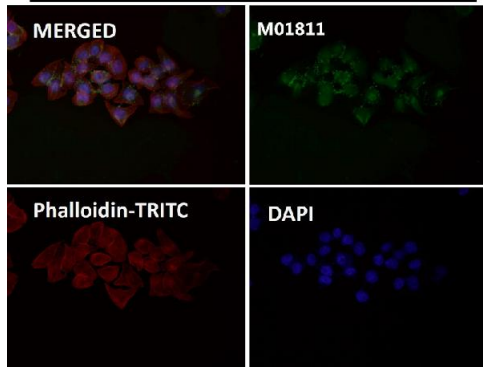
antibody and ELISA experts

BOSTER BIOLOGICAL TECHNOLOGY

Building C21, 3rd to 5th Floors, Optics Valley Biopharmaceutical Accelerator,
East Lake High-Tech Development Zone, Wuhan.

Web: www.boster.com **Phone:** 027-67845390/1/2 **Email:** boster@boster.com

HeLa



Immunofluorescent analysis using the Antibody at 1:50 dilution.