

## Basic Information

<b>Product Name</b>	Anti-FOXO3A/FOXO3 (Phospho-S253) Antibody (Clone#ECG-6)
<b>Gene Name</b>	FOXO3
<b>Source</b>	Rabbit
<b>Clonality</b>	Monoclonal
<b>Isotype</b>	IgG
<b>Species Reactivity</b>	human, mouse, rat
<b>Tested Application</b>	WB, IHC
<b>Contents</b>	500 ug/ml; Rabbit IgG in phosphate buffered saline, pH 7.4, 150mM NaCl, 0.02% sodium azide, 0.4-0.5 mg/ml BSA and 50% glycerol.
<b>Immunogen</b>	A synthesized peptide derived from human FoxO3a
<b>Concentration</b>	500 ug/ml
<b>Purification</b>	Affinity-chromatography
<b>Observed MW</b>	80-100 kDa
<b>Dilution Ratios</b>	Western blot (WB): 1:500-2000 Immunohistochemistry (IHC):1:50-200

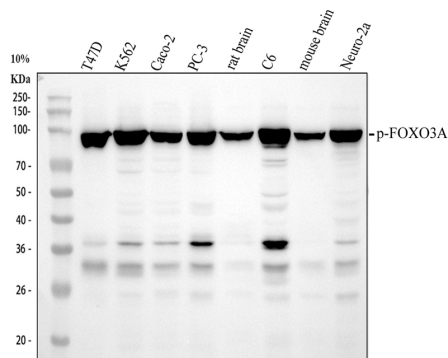
## Storage

12 months from date of receipt, -20°C as supplied.

## Reference

Anti-FOXO3A/FOXO3 (Phospho-S253) Antibody (Clone#ECG-6)被引用在4文献中。

## Selected Validation Data



Western blot analysis of FOXO3A/FOXO3 (Phospho-S253) using anti-FOXO3A/FOXO3 (Phospho-S253) antibody (BM4401). The sample well of each lane was loaded with 30 ug of sample under reducing conditions.

Lane 1: human T-47D whole cell lysates,

Lane 2: human K562 whole cell lysates,

Lane 3: human Caco-2 whole cell lysates,

Lane 4: human PC-3 whole cell lysates,

Lane 5: rat brain tissue lysates,

Lane 6: rat C6 whole cell lysates,

Lane 7: mouse brain tissue lysates,

Lane 8: mouse Neuro-2a whole cell lysates.

After electrophoresis, proteins were transferred to a membrane.

Then the membrane was incubated with rabbit anti-FOXO3A/FOXO3 (Phospho-S253) antigen affinity purified monoclonal antibody (BM4401) at a dilution of 1:1000 and probed with a goat anti-rabbit IgG-HRP secondary antibody (Catalog # BA1054). The signal is developed using ECL Plus Western Blotting Substrate (Catalog # AR1197). A specific band was detected for FOXO3A/FOXO3 (Phospho-S253) at approximately 80-100 kDa. The expected band size for FOXO3A/FOXO3 (Phospho-S253) is at 71 kDa.