

Basic Information

Product Name	Anti-EEA1 Antibody (Clone#ECH-5)		
Gene Name	EEA1		
Source	Rabbit		
Clonality	Monoclonal		
Isotype	IgG		
Species Reactivity	human, mouse, rat		
Tested Application	WB, ICC/IF		
Contents	500 ug/ml; Rabbit IgG in phosphate buffered saline, pH 7.4, 150mM NaCl, 0.02% sodium azide, 0.4-0.5 mg/ml BSA and 50% glycerol.		
Immunogen	A synthesized peptide derived from human EEA1		
Concentration	500 ug/ml		
Purification	Affinity-chromatography		
Observed MW	162 kDa		
Dilution Ratios	Western blot (WB): 1:500-2000 Immunocytochemistry/Immunofluorescence (ICC/IF):1:50-200		

Storage

12 months from date of receipt, -20°C as supplied.

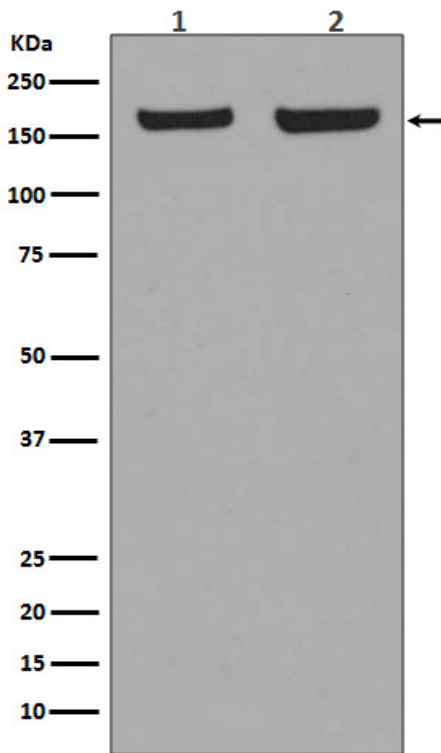
Background Information

The gene EEA1 encodes for the 1400 amino acid protein, Early Endosome Antigen 1. It localizes exclusively to early endosomes and has an important role in endosomal trafficking. EEA1 binds directly to the phospholipid phosphatidylinositol 3-phosphate through its C-terminal FYVE domain and forms a homodimer through a coiled coil. Furthermore, EEA1 acts as a tethering molecule that couples vesicle docking with SNAREs such as N-ethylmaleimide sensitive fusion protein, bringing the endosomes physically closer and ultimately resulting in the fusion and delivery of endosomal cargo.

Reference

Anti-EEA1 Antibody (Clone#ECH-5)被引用在1文献中。

Selected Validation Data



Western blot analysis of EEA1 expression in (1) HeLa cell lysate; (2) NIH/3T3 cell lysate.