

Basic Information

Product Name	Anti-PPP2CA/B Antibody (Clone#ECI-16)	
Gene Name	PPP2CA/PPP2CB	
Source	Rabbit	
Clonality	Monoclonal	
Isotype	IgG	
Species Reactivity	human, mouse, rat	
Tested Application	WB, IHC, ICC/IF, IP	
Contents	500 ug/ml; Rabbit IgG in phosphate buffered saline, pH 7.4, 150mM NaCl, 0.02% sodium azide, 0.4-0.5 mg/ml BSA and 50% glycerol.	
Immunogen	A synthesized peptide derived from human alpha + beta PP2A	
Concentration	500 ug/ml	
Purification	Affinity-chromatography	
Observed MW	36 kDa	
Dilution Ratios	Western blot (WB):	1:500-2000
	Immunohistochemistry (IHC):	1:50-200
	Immunocytochemistry/Immunofluorescence (ICC/IF):	1:50-200
	ImmunoPrecipitation (IP):	1:20

Storage

12 months from date of receipt, -20°C as supplied.

Background Information

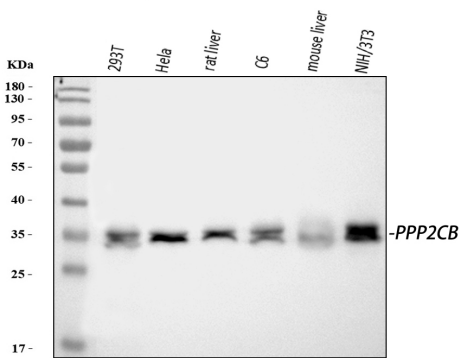
In eukaryotes, the phosphorylation and dephosphorylation of proteins on serine and threonine residues is an essential means of regulating a broad range of cellular functions, including division, homeostasis and apoptosis. A group of proteins that are intimately involved in this process are the protein phosphatases. In general, the protein phosphatase (PP) holoenzyme is a trimeric complex composed of a regulatory subunit, a variable subunit, and a catalytic subunit. Four major families of protein phosphatase catalytic subunits have been identified, designated PP1, PP2A, PP2B (calcineurin) and PP2C. An additional protein phosphatase catalytic subunit, PPX (also known as PP4) is a putative member of a novel PP family. The PP2A family comprises subfamily members PP2A α and PP2A β . The PP2A catalytic subunit associates with a variety of regulatory subunits. Regulatory subunits include PP2A-A α and -A β , PP2A-B α and -B β ,

PP2A-C α and -C β , PP2A-B56 α and -B56 β . Reversible carboxymethylation of the C-terminal leucine residue (Leu309) of the PP2A catalytic subunit (PP2A-C α / β) in vitro has been shown to regulate catalytic activity. It has been suggested that this posttranslational modification may play a role in assembly of the holoenzyme.

Reference

Anti-PPP2CA/B Antibody (Clone#ECI-16)被引用在1文献中。

Selected Validation Data



Western blot analysis of anti- PPP2CA antibody (BM4403). The sample well of each lane was loaded with 50ug of sample under reducing conditions. Lane 1: 293T whole cell, Lane 2: HeLa whole cell, Lane 3: rat liver tissue, Lane 4: C6 whole cell, Lane 5: mouse liver tissue, Lane 6: NIH/3T3 whole cell. Use mouse anti- PPP2CA 1:1000, probed with a goat anti-mouse IgG-HRP secondary antibody. The signal is developed using an Enhanced Chemiluminescent detection (ECL) kit (Catalog # EK1002). A specific band was detected for PPP2CA at approximately 35KD. The expected band size for PPP2CA is at 35KD.