

Basic Information

Product Name	Anti-Cytokeratin 10/KRT10 Antibody (Clone#EEF-11)		
Gene Name	KRT10		
Source	Rabbit		
Clonality	Monoclonal		
Isotype	IgG		
Species Reactivity	human, mouse, rat		
Tested Application	WB, IHC, ICC/IF, IP, FCM		
Contents	500 ug/ml; Rabbit IgG in phosphate buffered saline, pH 7.4, 150mM NaCl, 0.02% sodium azide, 0.4-0.5 mg/ml BSA and 50% glycerol.		
Immunogen	A synthesized peptide derived from human Cytokeratin 10		
Concentration	500 ug/ml		
Purification	Affinity-chromatography		
Observed MW	59 kDa		
Dilution Ratios	Western blot (WB):	1:500-2000	
	Immunohistochemistry (IHC):	1:50-200	
	Immunocytochemistry/Immunofluorescence (ICC/IF):	1:50-200	

Storage

12 months from date of receipt, -20°C as supplied.

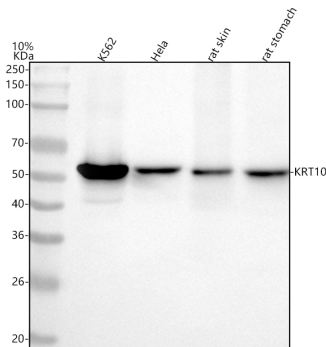
Background Information

Keratins are a large family of proteins that form the intermediate filament cytoskeleton of epithelial cells, which are classified into two major sequence types. Type I keratins are a group of acidic intermediate filament proteins, including K9-K23, and the hair keratins Ha1-Ha8. Type II keratins are the basic or neutral counterparts to the acidic type I keratins, including K1-K8, and the hair keratins, Hb1-Hb6. As a type I keratin, keratin 10 is a suprabasal marker of differentiation in stratified squamous epithelia.

Reference

Anti-Cytokeratin 10/KRT10 Antibody (Clone#EEF-11)被引用在6文献中。

Selected Validation Data



Western blot analysis of anti-Cytokeratin 10/KRT10 antibody (BM4422).

The sample well of each lane was loaded with 30 ug of sample under reducing conditions.

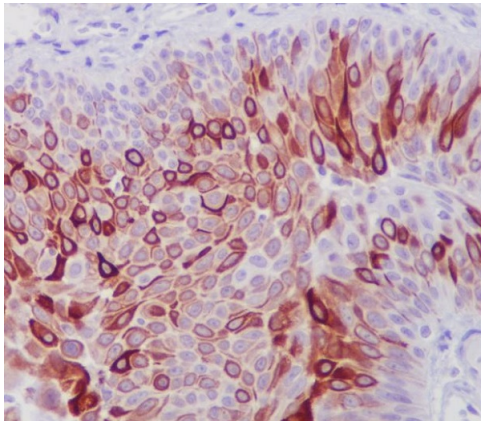
Lane 1: human K562 whole cell lysates,

Lane 2: human Hela whole cell lysates,

Lane 3: rat skin tissue lysates,

Lane 4: rat stomach tissue lysates.

After electrophoresis, proteins were transferred to a membrane. Then the membrane was incubated with rabbit anti-Cytokeratin 10/KRT10 antigen affinity purified monoclonal antibody (BM4422) at a dilution of 1:1000 and probed with a goat anti-rabbit IgG-HRP secondary antibody (Catalog # BA1054). The signal is developed using ECL Plus Western Blotting Substrate (Catalog # AR1197). A specific band was detected for Cytokeratin 10/KRT10 at approximately 59 kDa. The expected band size for Cytokeratin 10/KRT10 is at 59 kDa.



Immunohistochemical analysis of paraffin-embedded human bladder, using Cytokeratin 10 Antibody.