

## Basic Information

<b>Product Name</b>	Anti-GRK2 Antibody (Clone#EGE-1)
<b>Gene Name</b>	GRK2
<b>Source</b>	Rabbit
<b>Clonality</b>	Monoclonal
<b>Isotype</b>	IgG
<b>Species Reactivity</b>	human, mouse, rat
<b>Tested Application</b>	WB, IHC
<b>Contents</b>	500 ug/ml; Rabbit IgG in phosphate buffered saline, pH 7.4, 150mM NaCl, 0.02% sodium azide, 0.4-0.5 mg/ml BSA and 50% glycerol.
<b>Immunogen</b>	A synthesized peptide derived from human GRK2
<b>Concentration</b>	500 ug/ml
<b>Purification</b>	Affinity-chromatography
<b>Observed MW</b>	80 kDa
<b>Dilution Ratios</b>	Western blot (WB): 1:500-2000 Immunohistochemistry (IHC):1:50-200

## Storage

12 months from date of receipt, -20°C as supplied.

## Selected Validation Data

Product datasheet

**Anti-GRK2 Antibody (Clone#EGE-1)**

**Catalog Number: BM4441**

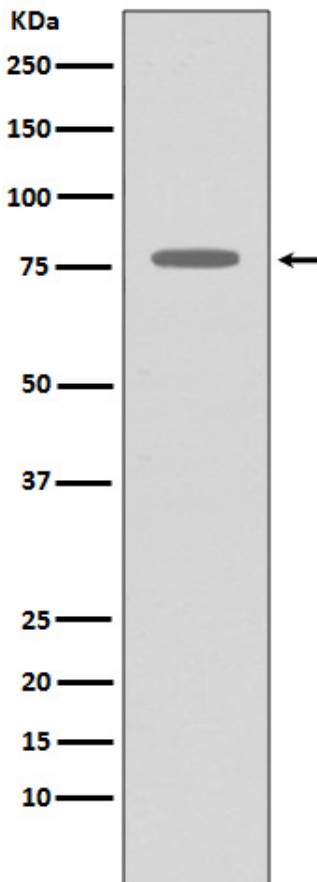


antibody and ELISA experts

**BOSTER BIOLOGICAL TECHNOLOGY**

Building C21, 3rd to 5th Floors, Optics Valley Biopharmaceutical Accelerator,  
East Lake High-Tech Development Zone, Wuhan.

**Web:** [www.boster.com](http://www.boster.com) **Phone:** 027-67845390/1/2 **Email:** [boster@boster.com](mailto:boster@boster.com)



Western blot analysis of GRK2 expression in THP-1 cell lysate.