

Basic Information

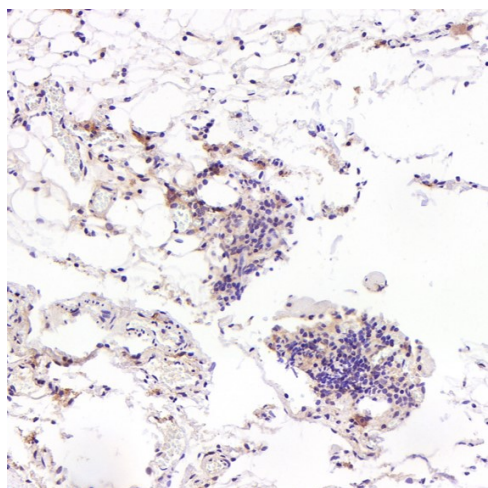
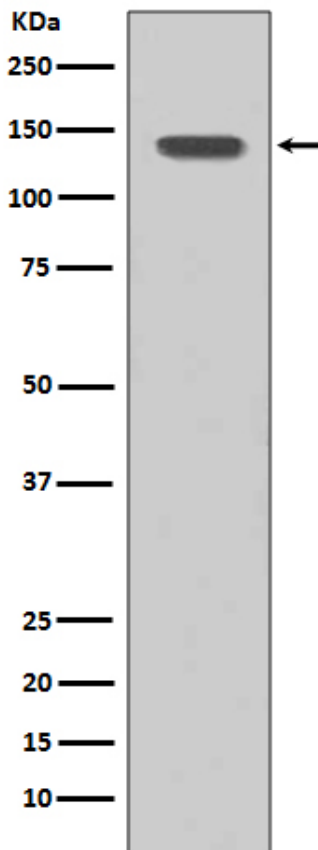
Product Name	Anti-FGFR1 Antibody (Clone#EHC-6)		
Gene Name	FGFR1		
Source	Rabbit		
Clonality	Monoclonal		
Isotype	IgG		
Species Reactivity	human		
Tested Application	WB, IHC, ICC/IF		
Contents	500 ug/ml; Rabbit IgG in phosphate buffered saline, pH 7.4, 150mM NaCl, 0.02% sodium azide, 0.4-0.5 mg/ml BSA and 50% glycerol.		
Immunogen	A synthesized peptide derived from human FGFR1		
Concentration	500 ug/ml		
Purification	Affinity-chromatography		
Observed MW	140 kDa		
Dilution Ratios	Western blot (WB):	1:500-2000	
	Immunocytochemistry/Immunofluorescence (ICC/IF):	1:50-200	

Storage

12 months from date of receipt, -20°C as supplied.

Selected Validation Data

Western blot analysis of FGFR1 expression in SH-SY5Y cell lysate.



Immunohistochemical analysis of paraffin-embedded Rat pancreas, using the Antibody.

Product datasheet

Anti-FGFR1 Antibody (Clone#EHC-6)

Catalog Number: **BM4449**

BOSTER[®]

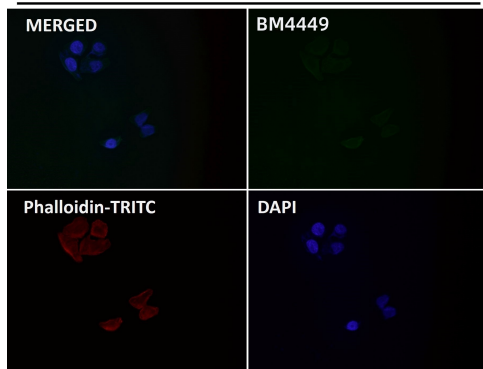
antibody and ELISA experts

BOSTER BIOLOGICAL TECHNOLOGY

Building C21, 3rd to 5th Floors, Optics Valley Biopharmaceutical Accelerator,
East Lake High-Tech Development Zone, Wuhan.

Web: www.boster.com **Phone:** 027-67845390/1/2 **Email:** boster@boster.com

Hela



Immunofluorescent analysis using the Antibody.