

Basic Information

Product Name	Anti-CA15-3/MUC1 Antibody (Clone#FHA-13)	
Gene Name	MUC1	
Source	Rabbit	
Clonality	Monoclonal	
Isotype	IgG	
Species Reactivity	human, mouse, rat	
Tested Application	WB, IHC, ICC/IF, IP, FCM	
Contents	500 ug/ml; Rabbit IgG in phosphate buffered saline, pH 7.4, 150mM NaCl, 0.02% sodium azide, 0.4-0.5 mg/ml BSA and 50% glycerol.	
Immunogen	A synthesized peptide derived from human MUC1	
Concentration	500 ug/ml	
Purification	Affinity-chromatography	
Observed MW	18-25 kDa	
Dilution Ratios	Western blot (WB):	1:500-2000
	Immunohistochemistry (IHC):	1:50-200
	Immunocytochemistry/Immunofluorescence (ICC/IF):	1:50-200
	ImmunoPrecipitation (IP):	1:20
	Flow Cytometry (FCM):	1:20

Storage

12 months from date of receipt, -20°C as supplied.

Background Information

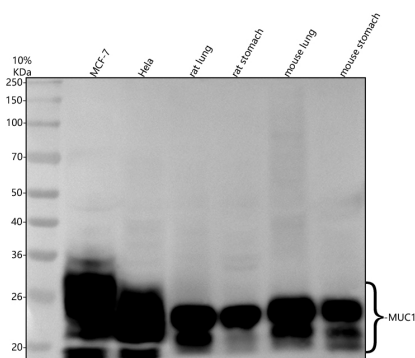
MUC1 is a large cell surface mucin glycoprotein expressed by most glandular and ductal epithelial cells and some hematopoietic cell lineages. It is expressed on most secretory epithelium, including mammary gland and some hematopoietic cells. It is expressed abundantly in lactating mammary glands and overexpressed abundantly in >90% breast carcinomas and metastases. Transgenic MUC1 has been shown to associate with all four cebB receptors and localize with erbB1(EGFR) in lactating glands. The MUC1 gene contains seven exons and produces several different alternatively spliced variants. The major expressed form of MUC1 uses all seven exons and is a type I transmembrane protein with a large extracellular tandem repeat domain. The tandem repeat domain is highly O glycosylated and

alterations in glycosylation have been shown in epithelial cancer cells.

Reference

Anti-CA15-3/MUC1 Antibody (Clone#FHA-13)被引用在2文献中。

Selected Validation Data



Western blot analysis of anti-CA15-3/MUC1 antibody (BM4548). The sample well of each lane was loaded with 30 ug of sample under reducing conditions.

Lane 1: human MCF-7 whole cell lysates,

Lane 2: human Hela whole cell lysates,

Lane 3: rat lung tissue lysates,

Lane 4: rat stomach tissue lysates,

Lane 5: mouse lung tissue lysates,

Lane 6: mouse stomach tissue lysates.

After electrophoresis, proteins were transferred to a membrane.

Then the membrane was incubated with rabbit anti-CA15-3/MUC1 antigen affinity purified monoclonal antibody (BM4548) at a dilution of 1:1000 and probed with a goat anti-rabbit IgG-HRP secondary antibody (Catalog # BA1054). The signal is developed using ECL Plus Western Blotting Substrate (Catalog # AR1197). A specific band was detected for CA15-3/MUC1 at approximately 17-30 kDa. The expected band size for CA15-3/MUC1 is at 122 kDa.

Product datasheet

**Anti-CA15-3/MUC1 Antibody
(Clone#FHA-13)**

Catalog Number: BM4548

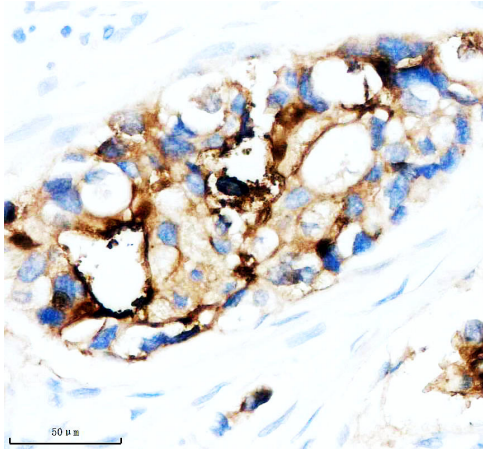
BOSTER[®]

antibody and ELISA experts

BOSTER BIOLOGICAL TECHNOLOGY

Building C21, 3rd to 5th Floors, Optics Valley Biopharmaceutical Accelerator,
East Lake High-Tech Development Zone, Wuhan.

Web: www.boster.com **Phone:** 027-67845390/1/2 **Email:** boster@boster.com



IHC analysis of MUC1 using anti-MUC1 antibody (BM4548).

MUC1 was detected in a paraffin-embedded section of human breast cancer tissue. The tissue section was incubated with rabbit anti-MUC1 Antibody (BM4548) at a dilution of 1:200 and developed using HRP Conjugated Rabbit IgG Super Vision Assay Kit (Catalog # SV0002) with DAB (Catalog # AR1027) as the chromogen.