

Basic Information

Product Name	Anti-Caspase 6/CASP6 (p18) Antibody (Clone#GBD-3)
Gene Name	CASP6
Source	Rabbit
Clonality	Monoclonal
Isotype	IgG
Species Reactivity	human
Tested Application	WB, IP
Contents	500 ug/ml; Rabbit IgG in phosphate buffered saline, pH 7.4, 150mM NaCl, 0.02% sodium azide, 0.4-0.5 mg/ml BSA and 50% glycerol.
Immunogen	A synthesized peptide derived from human Caspase-6 p18
Concentration	500 ug/ml
Purification	Affinity-chromatography
Observed MW	33 kDa
Dilution Ratios	Western blot (WB): 1:500-2000 ImmunoPrecipitation (IP):1:20

Storage

12 months from date of receipt, -20°C as supplied.

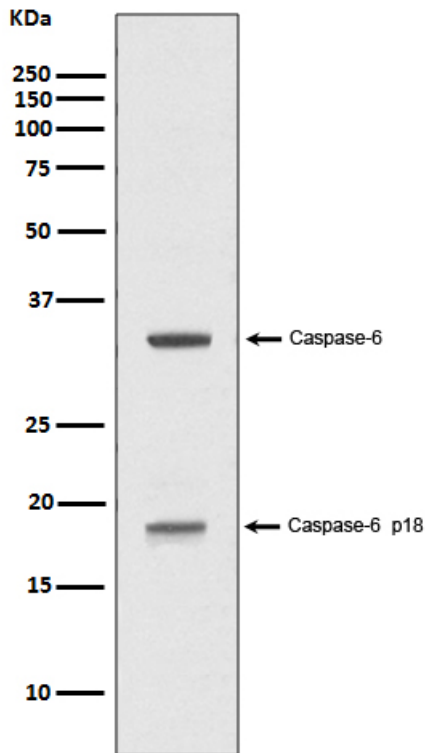
Background Information

Caspase 6 is an enzyme that in humans is encoded by the caspase 6 gene. This gene encodes a protein that is a member of the cysteine-aspartic acid protease(caspase) family. Using radiation hybrid mapping, the Caspase 6 gene is localized to human chromosome 4q25-q26. Caspase 6 functions as a downstream enzyme in the caspase activation cascade. And Caspase 6 can cleave lamin A to its signature apoptotic fragment.

Selected Validation Data

**Anti-Caspase 6/CASP6 (p18) Antibody
(Clone#GBD-3)**

Catalog Number: BM4592



Western blot analysis of Caspase-6 p18 expression in Jurkat cell treated with 1uM staurosporine lysate.