

## Basic Information

<b>Product Name</b>	Anti-Cytokeratin 18/KRT18 Antibody (Clone#GBF-11)	
<b>Gene Name</b>	KRT18	
<b>Source</b>	Rabbit	
<b>Clonality</b>	Monoclonal	
<b>Isotype</b>	IgG	
<b>Species Reactivity</b>	human, mouse, rat	
<b>Tested Application</b>	WB, IHC, ICC/IF, FCM	
<b>Contents</b>	500 ug/ml; Rabbit IgG in phosphate buffered saline, pH 7.4, 150mM NaCl, 0.02% sodium azide, 0.4-0.5 mg/ml BSA and 50% glycerol.	
<b>Immunogen</b>	A synthesized peptide derived from human Cytokeratin 18.	
<b>Concentration</b>	500 ug/ml	
<b>Purification</b>	Affinity-chromatography	
<b>Observed MW</b>	48 kDa	
<b>Dilution Ratios</b>	Western blot (WB):	1:500-2000
	Immunohistochemistry (IHC):	1:50-200
	Immunocytochemistry/Immunofluorescence (ICC/IF):	1:50-200
	Flow Cytometry (FCM):	1:60

## Storage

12 months from date of receipt, -20°C as supplied.

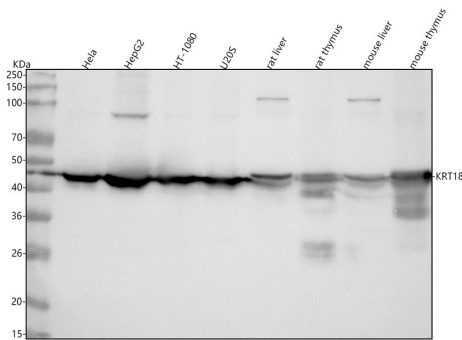
## Background Information

Intermediate filaments(IFs) are a structurally related family of cellular proteins that appear to be intimately involved with the cytoskeleton. Human keratin 18(KRT18) and the homologous mouse Endo B are type I IF protein subunits whose expression is restricted in adults to a variety of simple epithelial tissues. The KRT18 gene is 3,791 bp long and the keratin 18 protein is coded for by 7 exons. The K18 gene is 3791 bp in length and the K18 protein is coded for by seven exons. By Southern blotting using the genomic DNA PCR product, the gene for keratin 18 is assigned to chromosome 12. Mutation of human keratin 18 in association with cryptogenic cirrhosis.

## Reference

Anti-Cytokeratin 18/KRT18 Antibody (Clone#GBF-11)被引用在7文献中。

## Selected Validation Data



Western blot analysis of anti-Cytokeratin 18/KRT18 antibody (BM4594).

The sample well of each lane was loaded with 30 ug of sample under reducing conditions.

Lane 1: human Hela whole cell lysates,

Lane 2: human HepG2 whole cell lysates,

Lane 3: human HT-1080 whole cell lysates,

Lane 4: human U2OS whole cell lysates,

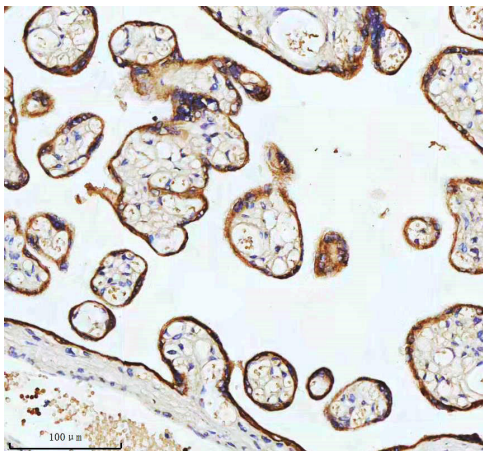
Lane 5: rat liver tissue lysates,

Lane 6: rat thymus tissue lysates,

Lane 7: mouse liver tissue lysates,

Lane 8: mouse thymus tissue lysates.

After electrophoresis, proteins were transferred to a membrane. Then the membrane was incubated with rabbit anti-Cytokeratin 18/KRT18 antigen affinity purified monoclonal antibody (BM4594) at a dilution of 1:1000 and probed with a goat anti-rabbit IgG-HRP secondary antibody (Catalog # BA1054). The signal is developed using ECL Plus Western Blotting Substrate (Catalog # AR1197). A specific band was detected for Cytokeratin 18/KRT18 at approximately 48 kDa. The expected band size for Cytokeratin 18/KRT18 is at 48 kDa.

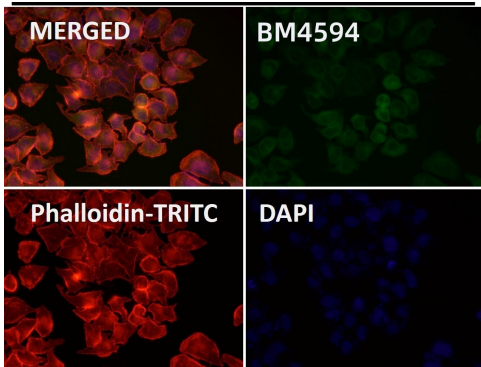


IHC analysis of Cytokeratin 18/KRT18 using anti-Cytokeratin 18/KRT18 antibody (BM4594) .

Cytokeratin 18/KRT18 was detected in a paraffin-embedded section of human placenta tissue. The tissue section was incubated with rabbit anti-Cytokeratin 18/KRT18 Antibody (BM4594) at a dilution of 1:200 and developed using HRP Conjugated Rabbit IgG Super Vision Assay Kit (Catalog # SV0002) with DAB (Catalog # AR1027) as the chromogen.

**Anti-Cytokeratin 18/KRT18 Antibody  
(Clone#GBF-11)**

**Catalog Number: BM4594**



Immunofluorescent analysis using the Antibody.