

Basic Information

Product Name	Anti-Cytokeratin 7/KRT7 Antibody (Clone#GEC-11)		
Gene Name	KRT7		
Source	Rabbit		
Clonality	Monoclonal		
Isotype	IgG		
Species Reactivity	human, mouse, rat		
Tested Application	WB, IHC, ICC/IF		
Contents	500 ug/ml; Rabbit IgG in phosphate buffered saline, pH 7.4, 150mM NaCl, 0.02% sodium azide, 0.4-0.5 mg/ml BSA and 50% glycerol.		
Immunogen	A synthesized peptide derived from human Cytokeratin 7		
Concentration	500 ug/ml		
Purification	Affinity-chromatography		
Observed MW	51 kDa		
Dilution Ratios	Western blot (WB):	1:500-2000	
	Immunohistochemistry (IHC):	1:50-200	
	Immunocytochemistry/Immunofluorescence (ICC/IF):	1:50-200	

Storage

12 months from date of receipt, -20°C as supplied.

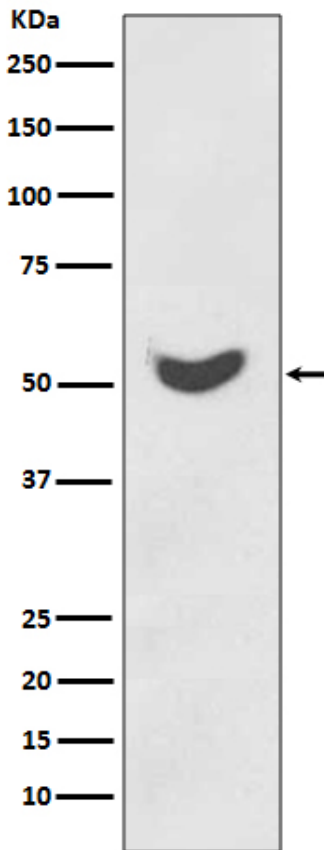
Background Information

KRT7 is a type II keratin of simple nonkeratinizing epithelia. The deduced 489-amino acid protein has a calculated molecular mass of about 54 kD. K7 contains 4 central alpha-helical segments with heptad repeats of hydrophobic residues characteristic of a coiled-coil region. Within this domain, K7 shares 73% homology with epidermal K6B. KRT7 gene contains 9 exons and spans more than 15.6 kb. K7 gene is mapped to chromosome 12. Keratin 7 is expressed in a wide range of epithelial structures in humans.

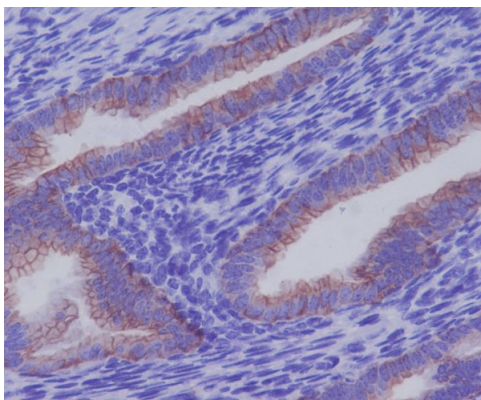
Reference

Anti-Cytokeratin 7/KRT7 Antibody (Clone#GEC-11)被引用在5文献中。

Selected Validation Data



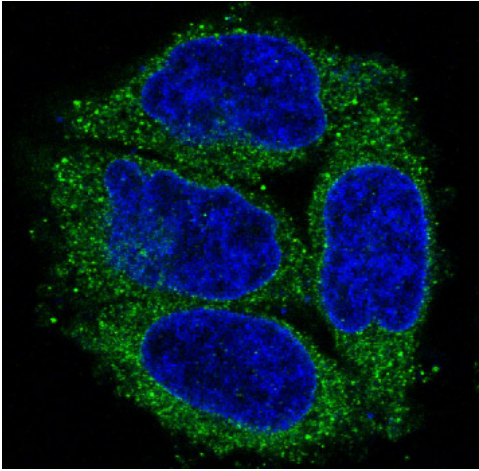
Western blot analysis of Cytokeratin 7 expression in HeLa cell lysate.



Immunohistochemical analysis of paraffin-embedded human uterus, using Cytokeratin 7 Antibody.

Anti-Cytokeratin 7/KRT7 Antibody
(Clone#GEC-11)

Catalog Number: BM4622



Immunofluorescent analysis of HeLa cells, using Cytokeratin 7 Antibody.