

Basic Information

Product Name	Anti-S100A4 Antibody (Clone#GFG-19)	
Gene Name	S100A4	
Source	Rabbit	
Clonality	Monoclonal	
Isotype	IgG	
Species Reactivity	human, mouse, rat	
Tested Application	WB, IHC, ICC/IF, IP, FCM	
Contents	500 ug/ml; Rabbit IgG in phosphate buffered saline, pH 7.4, 150mM NaCl, 0.02% sodium azide, 0.4-0.5 mg/ml BSA and 50% glycerol.	
Immunogen	A synthesized peptide derived from human S100A4	
Concentration	500 ug/ml	
Purification	Affinity-chromatography	
Observed MW	12 kDa	
Dilution Ratios	Western blot (WB):	1:500-2000
	Immunohistochemistry (IHC):	1:50-200
	Immunocytochemistry/Immunofluorescence (ICC/IF):	1:50-200
	ImmunoPrecipitation (IP):	1:40
	Flow Cytometry (FCM):	1:100

Storage

12 months from date of receipt, -20°C as supplied.

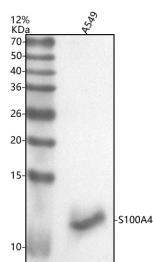
Background Information

S100 calcium-binding protein A4 (S100A4) is a protein that in humans is encoded by the S100A4 gene. The protein encoded by this gene is a member of the S100 family of proteins containing 2 EF-hand calcium-binding motifs. S100 proteins are localized in the cytoplasm and/or nucleus of a wide range of cells, and involved in the regulation of a number of cellular processes such as cell cycle progression and differentiation. S100 genes include at least 13 members which are located as a cluster on chromosome 1q21. This protein may function in motility, invasion, and tubulin polymerization. Chromosomal rearrangements and altered expression of this gene have been implicated in tumor metastasis. Multiple alternatively spliced variants, encoding the same protein, have been identified.

Reference

Anti-S100A4 Antibody (Clone#GFG-19)被引用在2文献中。

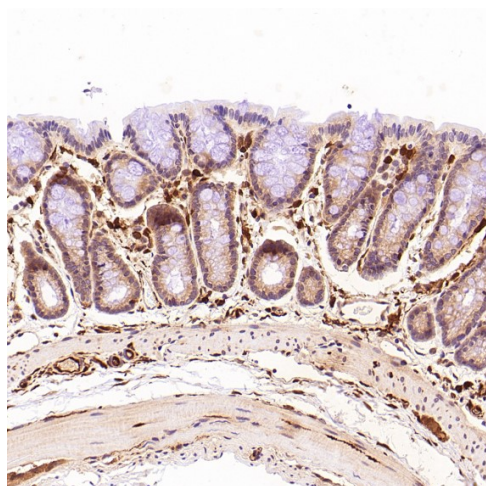
Selected Validation Data



Western blot analysis of anti-S100A4 antibody (BM4636). The sample well of each lane was loaded with 30 ug of sample under reducing conditions.

Lane 1: human A549 whole cell lysates.

After electrophoresis, proteins were transferred to a membrane. Then the membrane was incubated with rabbit anti-S100A4 antigen affinity purified monoclonal antibody (BM4636) at a dilution of 1:1000 and probed with a goat anti-rabbit IgG-HRP secondary antibody (Catalog # BA1054). The signal is developed using ECL Plus Western Blotting Substrate (Catalog # AR1197). A specific band was detected for S100A4 at approximately 12 kDa. The expected band size for S100A4 is at 12 kDa.



Immunohistochemical analysis of paraffin-embedded Rat stomach, using the Antibody.

Product datasheet

Anti-S100A4 Antibody (Clone#GFG-19)

Catalog Number: **BM4636**

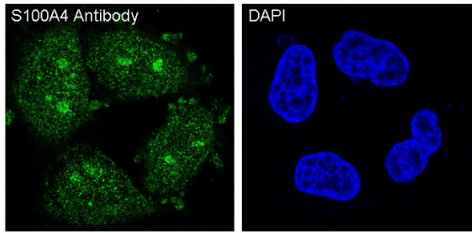
BOSTER[®]

antibody and ELISA experts

BOSTER BIOLOGICAL TECHNOLOGY

Building C21, 3rd to 5th Floors, Optics Valley Biopharmaceutical Accelerator,
East Lake High-Tech Development Zone, Wuhan.

Web: www.boster.com **Phone:** 027-67845390/1/2 **Email:** boster@boster.com



Immunofluorescent analysis of HeLa cells, using S100A4 Antibody.