

## Basic Information

<b>Product Name</b>	Anti-Caspase 6/CASP6 Antibody (Clone#HAA-3)	
<b>Gene Name</b>	CASP6	
<b>Source</b>	Rabbit	
<b>Clonality</b>	Monoclonal	
<b>Isotype</b>	IgG	
<b>Species Reactivity</b>	human, mouse, rat	
<b>Tested Application</b>	WB, IHC, ICC/IF, IP, FCM	
<b>Contents</b>	500 ug/ml; Rabbit IgG in phosphate buffered saline, pH 7.4, 150mM NaCl, 0.02% sodium azide, 0.4-0.5 mg/ml BSA and 50% glycerol.	
<b>Immunogen</b>	A synthesized peptide derived from human Caspase-6	
<b>Concentration</b>	500 ug/ml	
<b>Purification</b>	Affinity-chromatography	
<b>Observed MW</b>	33 kDa	
<b>Dilution Ratios</b>	Western blot (WB):	1:1000-5000
	Immunohistochemistry (IHC):	1:50-200
	Immunocytochemistry/Immunofluorescence (ICC/IF):	1:50-200
	ImmunoPrecipitation (IP):	1:20
	Flow Cytometry (FCM):	1:20

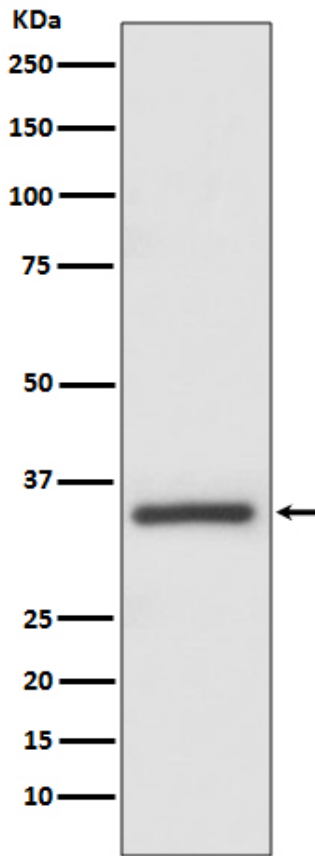
## Storage

12 months from date of receipt, -20°C as supplied.

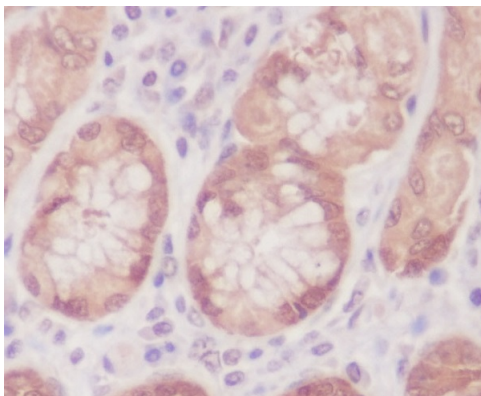
## Background Information

Caspase 6 is an enzyme that in humans is encoded by the caspase 6 gene. This gene encodes a protein that is a member of the cysteine-aspartic acid protease(caspase) family. Using radiation hybrid mapping, the Caspase 6 gene is localized to human chromosome 4q25-q26. Caspase 6 functions as a downstream enzyme in the caspase activation cascade. And Caspase 6 can cleave lamin A to its signature apoptotic fragment.

## Selected Validation Data



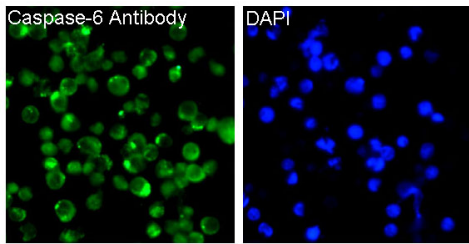
Western blot analysis of Caspase-6 expression in MCF-7 cell lysate.



Immunohistochemical analysis of paraffin-embedded human colon, using Caspase-6 Antibody.

**Anti-Caspase 6/CASP6 Antibody**  
**(Clone#HAA-3)**

**Catalog Number: BM4681**



Immunofluorescent analysis of Jurkat cells, using Caspase-6 Antibody.