

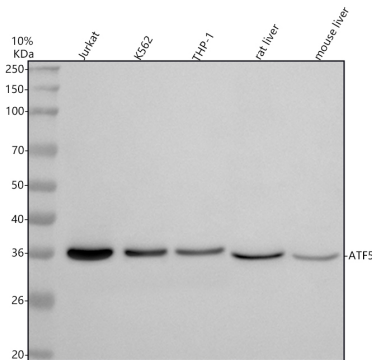
## Basic Information

<b>Product Name</b>	Anti-ATF5 Antibody (Clone#HDD-1)	
<b>Gene Name</b>	ATF5	
<b>Source</b>	Rabbit	
<b>Clonality</b>	Monoclonal	
<b>Isotype</b>	IgG	
<b>Species Reactivity</b>	human, mouse, rat	
<b>Tested Application</b>	WB, IHC, ICC/IF, IP	
<b>Contents</b>	500 ug/ml; Rabbit IgG in phosphate buffered saline, pH 7.4, 150mM NaCl, 0.02% sodium azide, 0.4-0.5 mg/ml BSA and 50% glycerol.	
<b>Immunogen</b>	A synthesized peptide derived from human ATF5	
<b>Concentration</b>	500 ug/ml	
<b>Purification</b>	Affinity-chromatography	
<b>Observed MW</b>	35 kDa	
<b>Dilution Ratios</b>	Western blot (WB):	1:500-2000
	Immunohistochemistry (IHC):	1:50-200
	Immunocytochemistry/Immunofluorescence (ICC/IF):	1:50-200
	ImmunoPrecipitation (IP):	1:20

## Storage

12 months from date of receipt, -20°C as supplied.

## Selected Validation Data



Western blot analysis of anti-ATF5 antibody (BM4714). The sample well of each lane was loaded with 30 ug of sample under reducing conditions.

Lane 1: human Jurkat whole cell lysates,

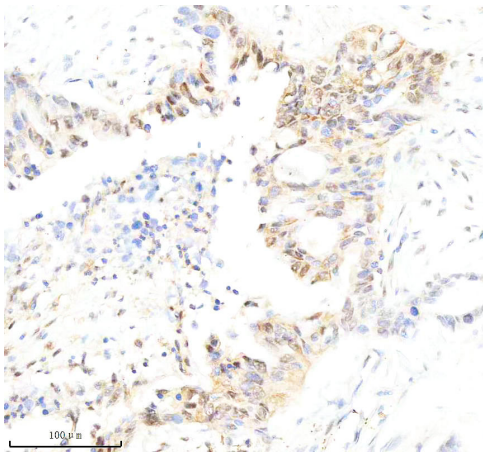
Lane 2: human K562 whole cell lysates,

Lane 3: human THP-1 whole cell lysates,

Lane 4: rat liver tissue lysates,

Lane 5: mouse liver tissue lysates.

After electrophoresis, proteins were transferred to a membrane. Then the membrane was incubated with rabbit anti-ATF5 antigen affinity purified monoclonal antibody (BM4714) at a dilution of 1:1000 and probed with a goat anti-rabbit IgG-HRP secondary antibody (Catalog # BA1054). The signal is developed using ECL Plus Western Blotting Substrate (Catalog # AR1197). A specific band was detected for ATF5 at approximately 35 kDa. The expected band size for ATF5 is at 31 kDa.



IHC analysis of ATF5 using anti-ATF5 antibody (BM4714).

ATF5 was detected in a paraffin-embedded section of human pancreas cancer tissue. The tissue section was incubated with rabbit anti-ATF5 Antibody (BM4714) at a dilution of 1:200 and developed using HRP Conjugated Rabbit IgG Super Vision Assay Kit (Catalog # SV0002) with DAB (Catalog # AR1027) as the chromogen.