

Basic Information

Product Name	Anti-RAF1 (Phospho-S259) Antibody (Clone#IOH-18)
Gene Name	RAF1
Source	Rabbit
Clonality	Monoclonal
Isotype	IgG
Species Reactivity	human, mouse, rat
Tested Application	WB, IHC
Contents	500 ug/ml; Rabbit IgG in phosphate buffered saline, pH 7.4, 150mM NaCl, 0.02% sodium azide, 0.4-0.5 mg/ml BSA and 50% glycerol.
Immunogen	A synthesized peptide derived from human Phospho-Raf1 (S259)
Concentration	500 ug/ml
Purification	Affinity-chromatography
Observed MW	73 kDa
Dilution Ratios	Western blot (WB): 1:500-2000 Immunohistochemistry (IHC):1:50-200

Storage

12 months from date of receipt, -20°C as supplied.

Background Information

RAF proto-oncogene serine/threonine-protein kinase, also known as proto-oncogene c-RAF or simply c-Raf or even Raf-1, is an enzyme that in humans is encoded by the RAF1 gene. This gene is the cellular homolog of viral raf gene (v-raf). The encoded protein is a MAP kinase kinasekinase (MAP3K), which functions downstream of the Ras family of membrane associated GTPases to which it binds directly. Once activated, the cellular RAF1 protein can phosphorylate to activate the dual specificity protein kinases MEK1 and MEK2, which in turn phosphorylate to activate the serine/threonine specific protein kinases, ERK1 and ERK2. Activated ERKs are pleiotropic effectors of cell physiology and play an important role in the control of gene expression involved in the cell division cycle, apoptosis, cell differentiation and cell migration. Mutations in this gene are associated with Noonan syndrome 5 and LEOPARD syndrome 2.

Reference

Product datasheet
Anti-RAF1 (Phospho-S259) Antibody
(Clone#IOH-18)
Catalog Number: BM4780

BOSTER[®]

antibody and ELISA experts

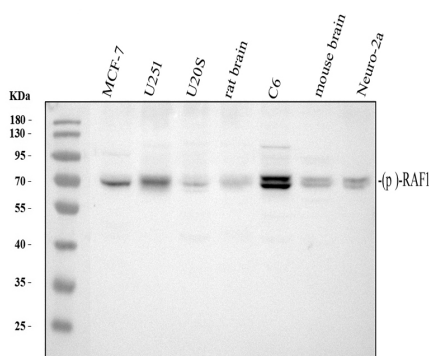
BOSTER BIOLOGICAL TECHNOLOGY

Building C21, 3rd to 5th Floors, Optics Valley Biopharmaceutical Accelerator,
East Lake High-Tech Development Zone, Wuhan.

Web: www.boster.com **Phone:** 027-67845390/1/2 **Email:** boster@boster.com

Anti-RAF1 (Phospho-S259) Antibody (Clone#IOH-18)被引用在1文献中。

Selected Validation Data



Western blot analysis of RAF1 (Phospho-S259) using anti-RAF1 (Phospho-S259) antibody (BM4780). The sample well of each lane was loaded with 30 ug of sample under reducing conditions.

Lane 1: human MCF-7 whole cell lysates,

Lane 2: human U251 whole cell lysates,

Lane 3: human U2OS whole cell lysates,

Lane 4: rat brain tissue lysates,

Lane 5: rat C6 whole cell lysates,

Lane 6: mouse brain tissue lysates,

Lane 7: mouse Neuro-2a whole cell lysates.

After electrophoresis, proteins were transferred to a membrane.

Then the membrane was incubated with rabbit anti-RAF1 (Phospho-S259) antigen affinity purified monoclonal antibody (BM4780) at a dilution of 1:1000 and probed with a goat anti-rabbit IgG-HRP

secondary antibody (Catalog # BA1054). The signal is developed

using ECL Plus Western Blotting Substrate (Catalog # AR1197). A

specific band was detected for RAF1 (Phospho-S259) at

approximately 73 kDa. The expected band size for RAF1 (Phospho-

S259) is at 73 kDa.