

## Basic Information

Product Name	Anti-AKT1/2 Antibody (Clone#17A25)		
Gene Name	AKT1/AKT2		
Source	Rabbit		
Clonality	Monoclonal		
Isotype	IgG		
Species Reactivity	human, mouse, rat		
Tested Application	WB, IHC, ICC/IF, FCM		
Contents	500 ug/ml; Rabbit IgG in phosphate buffered saline, pH 7.4, 150mM NaCl, 0.02% sodium azide, 0.4-0.5 mg/ml BSA and 50% glycerol.		
Immunogen	A synthesized peptide derived from human AKT1/2		
Concentration	500 ug/ml		
Observed MW	56 kDa		
Dilution Ratios	Western blot (WB):	1:500-2000	
	Immunohistochemistry (IHC):	1:50-200	
	Immunocytochemistry/Immunofluorescence (ICC/IF):	1:50-200	
	Flow Cytometry (FCM):	1:20	

## Storage

12 months from date of receipt, -20°C as supplied.

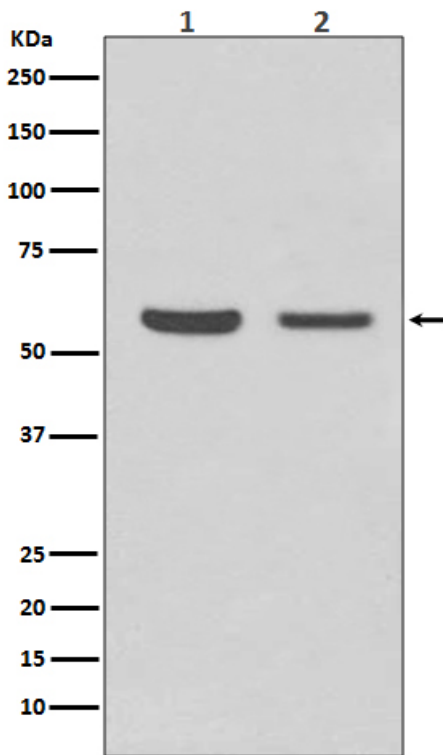
## Background Information

The serine/threonine kinase AKT (protein kinase B or PKB) has a central role in the regulation of several signaling pathways controlling cell proliferation, apoptosis, angiogenesis, and diabetes.

## Reference

Anti-AKT1/2 Antibody (Clone#17A25)被引用在4文献中。

## Selected Validation Data



Western blot analysis of AKT1/2 expression in (1) HeLa cell lysate; (2) NIH/3T3 cell lysate.