

Basic Information

Product Name	Anti-LC3B/MAP1LC3B Antibody (Clone#IEC-13)	
Gene Name	MAP1LC3B	
Source	Rabbit	
Clonality	Monoclonal	
Isotype	IgG	
Species Reactivity	human, mouse, rat	
Tested Application	WB, IHC, ICC/IF, IP	
Contents	500 ug/ml; Rabbit IgG in phosphate buffered saline, pH 7.4, 150mM NaCl, 0.02% sodium azide, 0.4-0.5 mg/ml BSA and 50% glycerol.	
Immunogen	A synthesized peptide derived from human LC3B	
Concentration	500 ug/ml	
Purification	Affinity-chromatography	
Observed MW	18 kDa	
Dilution Ratios	Western blot (WB):	1:500-2000
	Immunohistochemistry (IHC):	1:50-200
	Immunocytochemistry/Immunofluorescence (ICC/IF):	1:50-200
	ImmunoPrecipitation (IP):	1:50

Storage

12 months from date of receipt, -20°C as supplied. 6 months 2 to 8°C after reconstitution. Avoid repeated freezing and thawing.

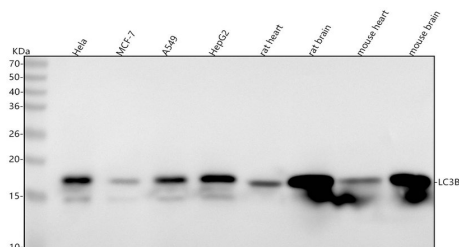
Background Information

MAP1LC3B is a member of the MAP1 LC3 family. MAP1LC3B is a subunit of neuronal microtubule-associated MAP1A and MAP1B proteins, that are involved in microtubule assembly and important for neurogenesis. In addition, MAP1LC3B takes part in formation of autophagosomal vacuoles and is expressed mainly in heart, testis, brain and skeletal muscle.

Reference

Anti-LC3B/MAP1LC3B Antibody (Clone#IEC-13)被引用在31文献中。

Selected Validation Data



Western blot analysis of anti-LC3B/MAP1LC3B antibody (BM4827).

The sample well of each lane was loaded with 30 ug of sample under reducing conditions.

Lane 1: human Hela whole cell lysates,

Lane 2: human MCF-7 whole cell lysates,

Lane 3: human A549 whole cell lysates,

Lane 4: human HepG2 whole cell lysates,

Lane 5: rat heart tissue lysates,

Lane 6: rat brain tissue lysates,

Lane 7: mouse heart tissue lysates,

Lane 8: mouse brain tissue lysates.

After electrophoresis, proteins were transferred to a membrane.

Then the membrane was incubated with rabbit anti-

LC3B/MAP1LC3B antigen affinity purified monoclonal antibody

(BM4827) at a dilution of 1:1000 and probed with a goat anti-rabbit

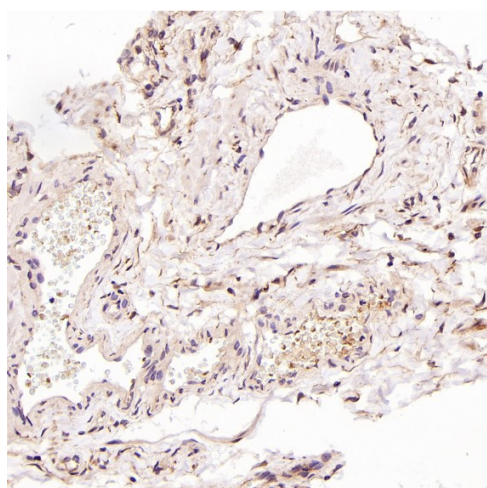
IgG-HRP secondary antibody (Catalog # BA1054). The signal is

developed using ECL Plus Western Blotting Substrate (Catalog #

AR1197). A specific band was detected for LC3B/MAP1LC3B at

approximately 18 kDa. The expected band size for LC3B/MAP1LC3B

is at 15 kDa.



Immunohistochemical analysis of paraffin-embedded Human testis cancer, using the Antibody.

Product datasheet

Anti-LC3B/MAP1LC3B Antibody
(Clone#IEC-13)

Catalog Number: BM4827

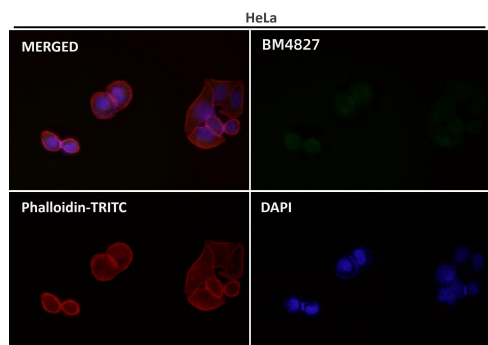
BOSTER[®]

antibody and ELISA experts

BOSTER BIOLOGICAL TECHNOLOGY

Building C21, 3rd to 5th Floors, Optics Valley Biopharmaceutical Accelerator,
East Lake High-Tech Development Zone, Wuhan.

Web: www.boster.com **Phone:** 027-67845390/1/2 **Email:** boster@boster.com



Immunofluorescent analysis using the Antibody.