

Basic Information

Product Name	Anti-LAMP1 Antibody (Clone#IIB-12)		
Gene Name	LAMP1		
Source	Rabbit		
Clonality	Monoclonal		
Isotype	IgG		
Species Reactivity	human		
Tested Application	WB, IHC		
Contents	500 ug/ml; Rabbit IgG in phosphate buffered saline, pH 7.4, 150mM NaCl, 0.02% sodium azide, 0.4-0.5 mg/ml BSA and 50% glycerol.		
Immunogen	A synthesized peptide derived from human LAMP1		
Concentration	500 ug/ml		
Purification	Affinity-chromatography		
Observed MW	90-120 kDa		
Dilution Ratios	Western blot (WB): 1:500-2000 Immunohistochemistry (IHC):1:50-200		

Storage

12 months from date of receipt, -20°C as supplied.

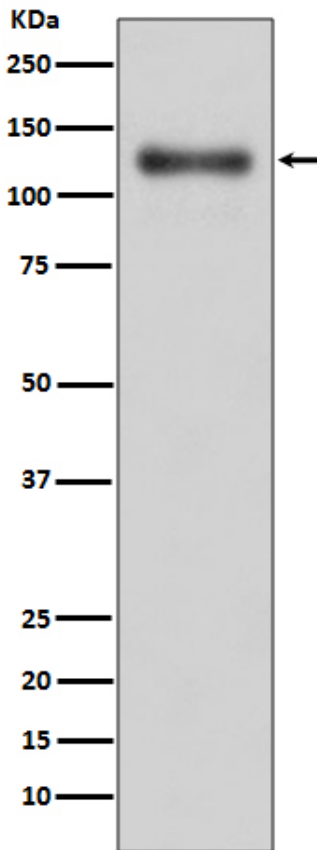
Background Information

LAMP1(lysosomal-associated membrane protein 1) also called LAMPA, LGP120 or CD107A, is a member of a family of membrane glycoproteins. This glycoprotein provides selectins with carbohydrate ligands. It may also play a role in tumor cell metastasis.°CD107a has also been shown to be a marker of degranulation on lymphocytes such as CD8+ and NK cells. By means of in situ hybridization, Mattei et al.(1990) assigned the LAMP1 gene to chromosome 13q34. A related gene, which may be a pseudogene, mapped to chromosome 12p13.3. Hybridization of LAMP1°CDNA to chromosome 12p13.3 was observed even when probes representing different portions of the LAMP1°CDNA were used.

Reference

Anti-LAMP1 Antibody (Clone#IIB-12)被引用在1文献中。

Selected Validation Data



Western blot analysis of LAMP1 expression in A431 cell lysate.