

Basic Information

Product Name	Anti-Glucagon/GCG Antibody (Clone#AOAF-7)
Gene Name	GCG
Source	Rabbit
Clonality	Monoclonal
Isotype	IgG
Species Reactivity	human, mouse, rat
Tested Application	WB, IHC
Contents	500 ug/ml; Rabbit IgG in phosphate buffered saline, pH 7.4, 150mM NaCl, 0.02% sodium azide, 0.4-0.5 mg/ml BSA and 50% glycerol.
Immunogen	A synthesized peptide derived from human Glucagon
Concentration	500 ug/ml
Purification	Affinity-chromatography
Observed MW	11 kDa
Dilution Ratios	Western blot (WB): 1:500-2000 Immunohistochemistry (IHC):1:50-200

Storage

12 months from date of receipt, -20°C as supplied.

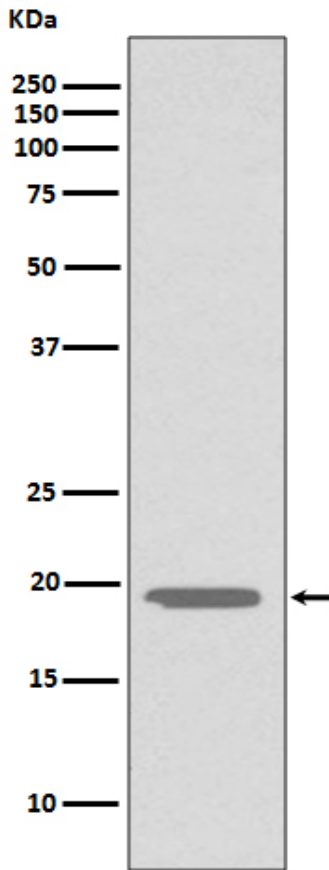
Background Information

GCG is also known as GLP1, or Glucagon. Glucagon is a 29-amino acid pancreatic hormone that counteracts the glucose-lowering action of insulin by stimulating glycogenolysis and gluconeogenesis. It is mapped to 2q36-2q37. GLP1, also known as 7-37 for the codons of the preproglucagon molecule which encode it, renders pancreatic beta-cells 'glucose-competent' and may be useful in the treatment of noninsulin-dependent diabetes mellitus. Also, GLP1 is a potent insulin secretagogue. It plays a major role in the enteroinsular axis, accounting, for example, for the finding that plasma insulin levels accompanying oral intake of glucose are greater than those observed when glucose is given intravenously.

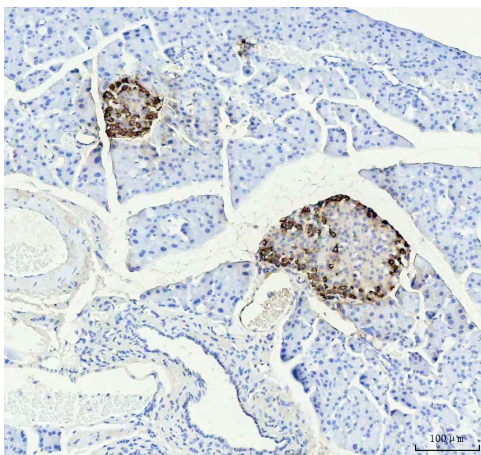
Reference

Anti-Glucagon/GCG Antibody (Clone#AOAF-7)被引用在2文献中。

Selected Validation Data



Western blot analysis of Glucagon expression in HepG2 cell lysate.



IHC analysis of Glucagon/GCG using anti-Glucagon/GCG antibody (BM4891) .

Glucagon/GCG was detected in a paraffin-embedded section of mouse pancreas tissue. The tissue section was incubated with rabbit anti-Glucagon/GCG Antibody (BM4891) at a dilution of 1:200 and developed using HRP Conjugated Rabbit IgG Super Vision Assay Kit (Catalog # SV0002) with DAB (Catalog # AR1027) as the chromogen.

Product datasheet

**Anti-Glucagon/GCG Antibody
(Clone#AOAF-7)**

Catalog Number: BM4891



antibody and ELISA experts

BOSTER BIOLOGICAL TECHNOLOGY

Building C21, 3rd to 5th Floors, Optics Valley Biopharmaceutical Accelerator,
East Lake High-Tech Development Zone, Wuhan.

Web: www.boster.com **Phone:** 027-67845390/1/2 **Email:** boster@boster.com