

Basic Information

Product Name	Anti-ELA2/ELANE Antibody (Clone#AOCI-5)		
Gene Name	ELANE		
Source	Rabbit		
Clonality	Monoclonal		
Isotype	IgG		
Species Reactivity	human		
Tested Application	WB, IHC, ICC/IF, FCM		
Contents	500 ug/ml; Rabbit IgG in phosphate buffered saline, pH 7.4, 150mM NaCl, 0.02% sodium azide, 0.4-0.5 mg/ml BSA and 50% glycerol.		
Immunogen	A synthesized peptide derived from human Neutrophil Elastase		
Concentration	500 ug/ml		
Purification	Affinity-chromatography		
Observed MW	29 kDa		
Dilution Ratios	Western blot (WB):	1:500-2000	
	Immunohistochemistry (IHC):	1:50-200	
	Immunocytochemistry/Immunofluorescence (ICC/IF):	1:50-200	
	Flow Cytometry (FCM):	1:30	

Storage

12 months from date of receipt, -20°C as supplied.

Background Information

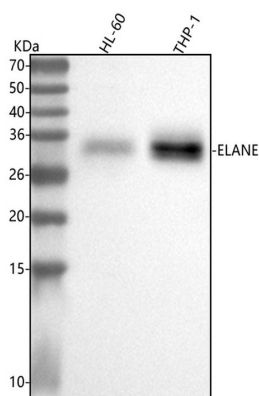
Neutrophil elastase is a serine protease of neutrophil and monocyte granules. Its key physiologic role is in innate host defense, but it can also participate in tissue remodeling and possesses secretagogue actions important to local inflammatory responses. Elastases form a subfamily of serine proteases that hydrolyze many proteins in addition to elastin. Humans have six elastase genes which encode structurally similar proteins. The encoded preproprotein is proteolytically processed to generate the active protease. Following activation, this protease hydrolyzes proteins within specialized neutrophil lysosomes, called azurophil granules, as well as proteins of the extracellular matrix. This protein also degrades the outer membrane protein A (OmpA) of E. coli as well as the virulence factors of such bacteria as Shigella, Salmonella and Yersinia. Mutations in this gene are associated with cyclic neutropenia and severe congenital

neutropenia (SCN). This gene is present in a gene cluster on chromosome 19.

Reference

Anti-ELA2/ELANE Antibody (Clone#AOCI-5)被引用在2文献中。

Selected Validation Data



Western blot analysis of anti-ELA2/ELANE antibody (BM4914). The sample well of each lane was loaded with 30 ug of sample under reducing conditions.

Lane 1: human HL-60 whole cell lysates,

Lane 2: human THP-1 whole cell lysates.

After electrophoresis, proteins were transferred to a membrane.

Then the membrane was incubated with rabbit anti-ELA2/ELANE antigen affinity purified monoclonal antibody (BM4914) at a dilution of 1:1000 and probed with a goat anti-rabbit IgG-HRP secondary antibody (Catalog # BA1054). The signal is developed using ECL Plus Western Blotting Substrate (Catalog # AR1197). A specific band was detected for ELA2/ELANE at approximately 35 kDa. The expected band size for ELA2/ELANE is at 29 kDa.