

## Basic Information

<b>Product Name</b>	Anti-KLF4 Antibody (Clone#AODA-11)	
<b>Gene Name</b>	KLF4	
<b>Source</b>	Rabbit	
<b>Clonality</b>	Monoclonal	
<b>Isotype</b>	IgG	
<b>Species Reactivity</b>	human, mouse, rat	
<b>Tested Application</b>	WB, IHC, ICC/IF	
<b>Contents</b>	500 ug/ml; Rabbit IgG in phosphate buffered saline, pH 7.4, 150mM NaCl, 0.02% sodium azide, 0.4-0.5 mg/ml BSA and 50% glycerol.	
<b>Immunogen</b>	A synthesized peptide derived from human KLF4	
<b>Concentration</b>	500 ug/ml	
<b>Purification</b>	Affinity-chromatography	
<b>Observed MW</b>	55 kDa	
<b>Dilution Ratios</b>	Western blot (WB):	1:500-2000
	Immunohistochemistry (IHC):	1:50-200
	Immunocytochemistry/Immunofluorescence (ICC/IF):	1:50-200

## Storage

12 months from date of receipt, -20°C as supplied.

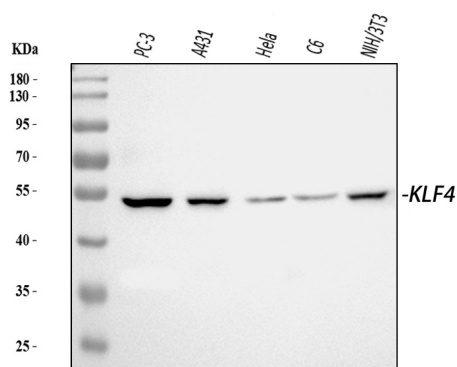
## Background Information

Kruppel-like factor 4, also known as EZF or GKLF, is a protein that in humans is encoded by the KLF4 gene. This gene is mapped to 9q31.2. KLF4 gene encodes a member of the Kruppel family of transcription factors. This gene plays an important role in maintaining embryonic stem cells, and in preventing their differentiation. It is required for establishing the barrier function of the skin and for postnatal maturation and maintenance of the ocular surface. This gene involved in the differentiation of epithelial cells and may also function in skeletal and kidney development.

## Reference

Anti-KLF4 Antibody (Clone#AODA-11)被引用在5文献中。

## Selected Validation Data



Western blot analysis of anti-KLF4 antibody (BM4916). The sample well of each lane was loaded with 50ug of sample under reducing conditions. Lane 1: PC-3 whole cell, Lane 2: A431 whole cell, Lane 3: HeLa whole cell, Lane 4: C6 whole cell, Lane 5: NIH/3T3 whole cell. Use mouse anti-KLF4 1:1000, probed with a goat anti-mouse IgG-HRP secondary antibody. The signal is developed using an Enhanced Chemiluminescent detection (ECL) kit (Catalog # EK1002). A specific band was detected for KLF4 at approximately 55KD. The expected band size for KLF4 is at 54KD.