

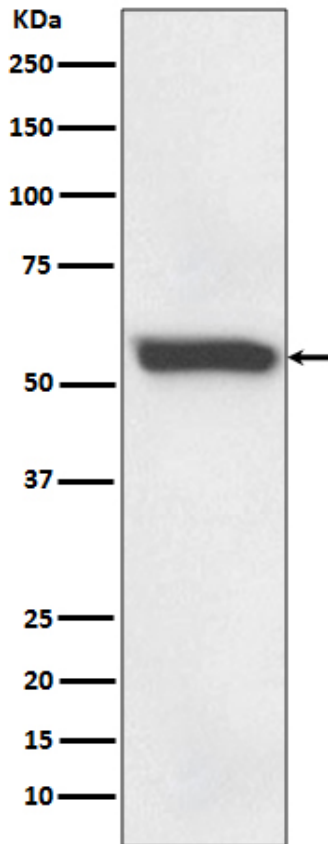
## Basic Information

<b>Product Name</b>	Anti-FTCD Antibody (Clone#AODH-6)		
<b>Gene Name</b>	FTCD		
<b>Source</b>	Rabbit		
<b>Clonality</b>	Monoclonal		
<b>Isotype</b>	IgG		
<b>Species Reactivity</b>	human		
<b>Tested Application</b>	WB, IHC, FCM		
<b>Contents</b>	500 ug/ml; Rabbit IgG in phosphate buffered saline, pH 7.4, 150mM NaCl, 0.02% sodium azide, 0.4-0.5 mg/ml BSA and 50% glycerol.		
<b>Immunogen</b>	A synthesized peptide derived from human 58K Golgi protein		
<b>Concentration</b>	500 ug/ml		
<b>Purification</b>	Affinity-chromatography		
<b>Observed MW</b>	58 kDa		
<b>Dilution Ratios</b>	Western blot (WB):	1:500-2000	
	Immunohistochemistry (IHC):	1:50-200	
	Flow Cytometry (FCM):	1:20	

## Storage

12 months from date of receipt, -20°C as supplied.

## Selected Validation Data



Western blot analysis of 58K Golgi protein expression in human fetal liver lysate.