

Basic Information

Product Name	Anti-NF-H/NF200/NEFH Antibody (Clone#AOEO-14)
Gene Name	NEFH
Source	Rabbit
Clonality	Monoclonal
Isotype	IgG
Species Reactivity	human, mouse, rat
Tested Application	WB, IHC
Contents	500 ug/ml; Rabbit IgG in phosphate buffered saline, pH 7.4, 150mM NaCl, 0.02% sodium azide, 0.4-0.5 mg/ml BSA and 50% glycerol.
Immunogen	A synthesized peptide derived from human NEFH
Concentration	500 ug/ml
Purification	Affinity-chromatography
Observed MW	117-220 kDa
Dilution Ratios	Western blot (WB): 1:500-2000 Immunohistochemistry (IHC):1:50-200

Storage

12 months from date of receipt, -20°C as supplied. 6 months 2 to 8°C after reconstitution. Avoid repeated freezing and thawing.

Background Information

Neurofilaments are type IV intermediate filament heteropolymers composed of light, medium, and heavy chains. Neurofilaments comprise the axoskeleton and functionally maintain neuronal caliber. They may also play a role in intracellular transport to axons and dendrites. This gene encodes the heavy neurofilament protein. This protein is commonly used as a biomarker of neuronal damage and susceptibility to amyotrophic lateral sclerosis (ALS) has been associated with mutations in this gene.

Reference

Anti-NF-H/NF200/NEFH Antibody (Clone#AOEO-14)被引用在11文献中。

Product datasheet

**Anti-NF-H/NF200/NEFH Antibody
(Clone#AOEO-14)**

Catalog Number: BM4925

BOSTER[®]

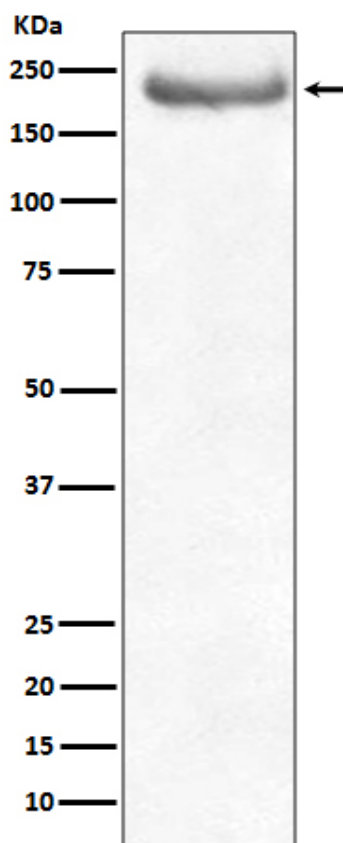
antibody and ELISA experts

BOSTER BIOLOGICAL TECHNOLOGY

Building C21, 3rd to 5th Floors, Optics Valley Biopharmaceutical Accelerator,
East Lake High-Tech Development Zone, Wuhan.

Web: www.boster.com **Phone:** 027-67845390/1/2 **Email:** boster@boster.com

Selected Validation Data



Western blot analysis of NEFH expression in human brain lysate.