

## Basic Information

|                           |   |            |  |
|---------------------------|---|------------|--|
| <b>Product Name</b>       | Anti-CD90/THY1 Antibody (Clone#AOFC-20)   |            |  |
| <b>Gene Name</b>          | THY1  |            |  |
| <b>Source</b>             | Rabbit  |            |  |
| <b>Clonality</b>          | Monoclonal  |            |  |
| <b>Isotype</b>            | IgG   |            |  |
| <b>Species Reactivity</b> | human   |            |  |
| <b>Tested Application</b> | WB, IHC, ICC/IF   |            |  |
| <b>Contents</b>           | 500 ug/ml; Rabbit IgG in phosphate buffered saline, pH 7.4, 150mM NaCl, 0.02% sodium azide, 0.4-0.5 mg/ml BSA and 50% glycerol. |            |  |
| <b>Immunogen</b>          | A synthesized peptide derived from human THY1   |            |  |
| <b>Concentration</b>      | 500 ug/ml   |            |  |
| <b>Purification</b>       | Affinity-chromatography   |            |  |
| <b>Observed MW</b>        | 22-30 kDa   |            |  |
| <b>Dilution Ratios</b>    | Western blot (WB):  | 1:500-2000 |  |
|                           | Immunohistochemistry (IHC):   | 1:50-200   |  |
|                           | Immunocytochemistry/Immunofluorescence (ICC/IF):  | 1:50-200   |  |

## Storage

12 months from date of receipt, -20°C as supplied.

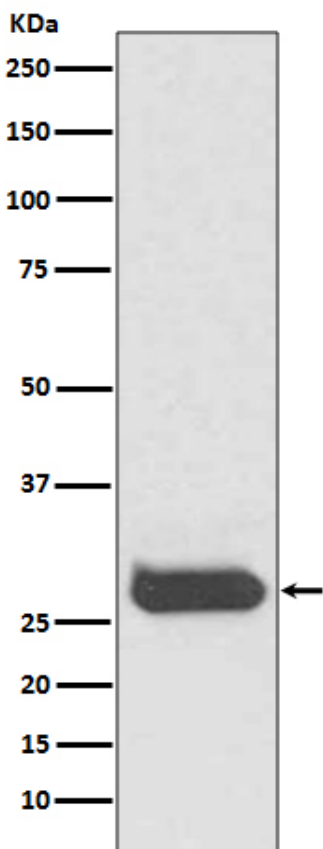
## Background Information

CD90(Cluster of Differentiation 90) or Thy-1 is a 25-37 kDa heavily N-glycosylated, glycosphosphatidylinositol(GPI) anchored conserved cell surface protein with a single V-like immunoglobulin domain, originally discovered as a thymocyte antigen. The CD90 gene is mapped to 11q23.3. Thy-1 can be used as a marker for a variety of stem cells and for the axonal processes of mature neurons. Structural study of Thy-1 lead to the foundation of the Immunoglobulin superfamily, of which it is the smallest member, and led to the first biochemical description and characterization of a vertebrate GPI anchor.

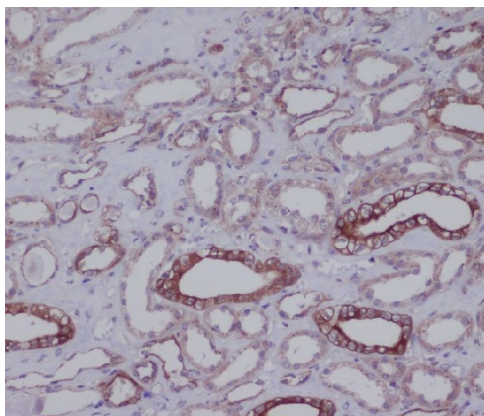
## Reference

Anti-CD90/THY1 Antibody (Clone#AOFC-20)被引用在3文献中。

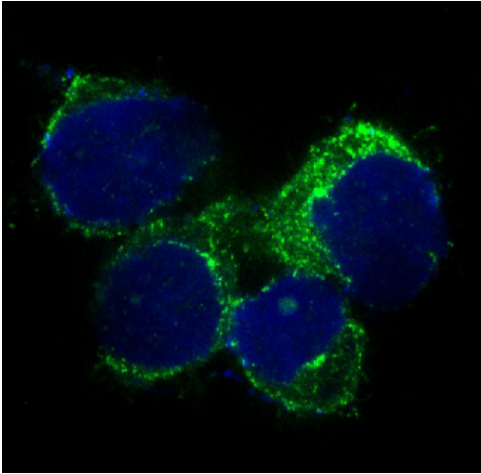
## Selected Validation Data



Western blot analysis of CD90 expression in human fetal brain lysate.



Immunohistochemical analysis of paraffin-embedded human kidney, using CD90 Antibody.



Immunofluorescent analysis of U87-MG cells, using CD90 Antibody.