

Basic Information

| | |
|---------------------------|---|
| Product Name | Anti-PROX1 Antibody (Clone#AOGA-16) |
| Gene Name | PROX1 |
| Source | Rabbit |
| Clonality | Monoclonal |
| Isotype | IgG |
| Species Reactivity | human |
| Tested Application | WB, IHC |
| Contents | 500 ug/ml; Rabbit IgG in phosphate buffered saline, pH 7.4, 150mM NaCl, 0.02% sodium azide, 0.4-0.5 mg/ml BSA and 50% glycerol. |
| Immunogen | A synthesized peptide derived from human PROX1 |
| Concentration | 500 ug/ml |
| Purification | Affinity-chromatography |
| Observed MW | 90 kDa |
| Dilution Ratios | Western blot (WB): 1:500-2000 Immunohistochemistry (IHC):1:50-200 |

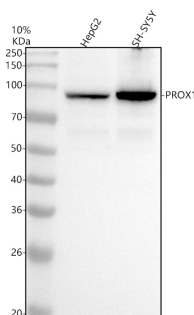
Storage

12 months from date of receipt, -20°C as supplied.

Background Information

Prospero homeobox protein 1, also called PROX1 is a protein that in humans is encoded by the PROX1 gene. This gene is mapped to 1q32.3. The protein encoded by this gene is a member of the homeobox transcription factor family. Members of this family contain a homeobox domain that consists of a 60-amino acid helix-turn-helix structure that binds DNA and RNA. The protein encoded by this gene is conserved across vertebrates and may play an essential role during development. Altered levels of this protein have been reported in cancers of different organs, such as colon, brain, blood, breast, pancreas, liver and esophagus.

Selected Validation Data



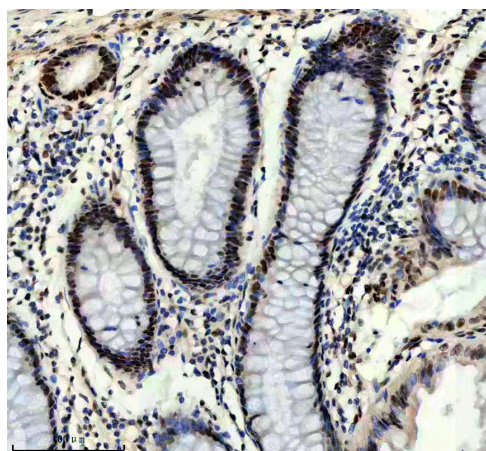
Western blot analysis of anti-PROX1 antibody (BM4946). The sample well of each lane was loaded with 30 ug of sample under reducing conditions.

Lane 1: human HepG2 whole cell lysates,

Lane 2: human SH-SY5Y whole cell lysates.

After electrophoresis, proteins were transferred to a membrane.

Then the membrane was incubated with rabbit anti-PROX1 antigen affinity purified monoclonal antibody (BM4946) at a dilution of 1:1000 and probed with a goat anti-rabbit IgG-HRP secondary antibody (Catalog # BA1054). The signal is developed using ECL Plus Western Blotting Substrate (Catalog # AR1197). A specific band was detected for PROX1 at approximately 90 kDa. The expected band size for PROX1 is at 83 kDa.



IHC analysis of PROX1 using anti-PROX1 antibody (BM4946) .

PROX1 was detected in a paraffin-embedded section of human colon tissue. The tissue section was incubated with rabbit anti-PROX1 Antibody (BM4946) at a dilution of 1:200 and developed using HRP Conjugated Rabbit IgG Super Vision Assay Kit (Catalog # SV0002) with DAB (Catalog # AR1027) as the chromogen.