

Basic Information

Product Name	Anti-AFP Antibody (Clone#AAOO-1)	
Gene Name	AFP	
Source	Rabbit	
Clonality	Monoclonal	
Isotype	IgG	
Species Reactivity	human	
Tested Application	WB, IHC, ICC/IF, IP, FCM	
Contents	500 ug/ml; Rabbit IgG in phosphate buffered saline, pH 7.4, 150mM NaCl, 0.02% sodium azide, 0.4-0.5 mg/ml BSA and 50% glycerol.	
Immunogen	A synthesized peptide derived from human AFP	
Concentration	500 ug/ml	
Purification	Affinity-chromatography	
Observed MW	69 kDa	
Dilution Ratios	Western blot (WB):	1:500-2000
	Immunohistochemistry (IHC):	1:50-200
	Immunocytochemistry/Immunofluorescence (ICC/IF):	1:50-200
	ImmunoPrecipitation (IP):	1:20
	Flow Cytometry (FCM):	1:20

Storage

12 months from date of receipt, -20°C as supplied.

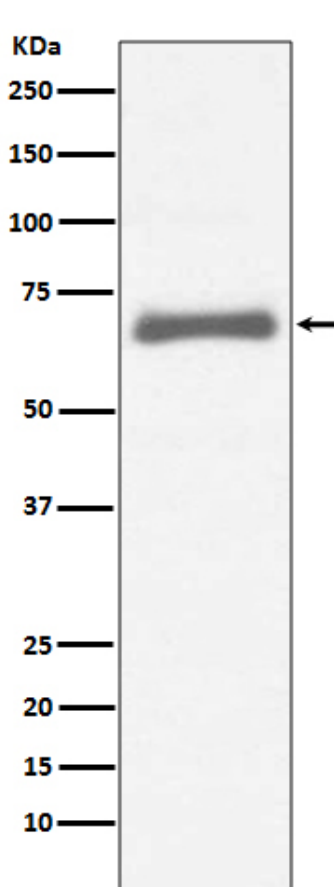
Background Information

AFP, also called Alpha-fetoprotein; alpha-fetoprotein, is a protein that in humans is encoded by the AFP gene. It is mapped to 4q13.3. The level of AFP in amniotic fluid is used to measure renal loss of protein to screen for spina bifida and anencephaly. In rodents AFP binds estradiol to prevent the transport of this hormone across the placenta to the fetus. The main function of this is to prevent the virilization of female fetuses. Moreover, it has an important role as a diagnostic marker, especially in certain tumors and liver diseases of childhood. AFP is also used to test the potential usefulness of plasma alpha fetoprotein determination as a diagnostic marker in biliary atresia, hepatitis, and yolk sac derived tumours.

Reference

Anti-AFP Antibody (Clone#AAOO-1)被引用在1文献中。

Selected Validation Data



Western blot analysis of AFP expression in HepG2 cell lysate.