

Basic Information

Product Name	Anti-TIMP1 Antibody (Clone#AAOD-20)		
Gene Name	TIMP1		
Source	Rabbit		
Clonality	Monoclonal		
Isotype	IgG		
Species Reactivity	human		
Tested Application	WB, IHC, ICC/IF		
Contents	500 ug/ml; Rabbit IgG in phosphate buffered saline, pH 7.4, 150mM NaCl, 0.02% sodium azide, 0.4-0.5 mg/ml BSA and 50% glycerol.		
Immunogen	A synthesized peptide derived from human TIMP1		
Concentration	500 ug/ml		
Purification	Affinity-chromatography		
Observed MW	23-28 kDa		
Dilution Ratios	Western blot (WB):	1:500-2000	
	Immunohistochemistry (IHC):	1:50-200	
	Immunocytochemistry/Immunofluorescence (ICC/IF):	1:50-200	

Storage

12 months from date of receipt, -20°C as supplied.

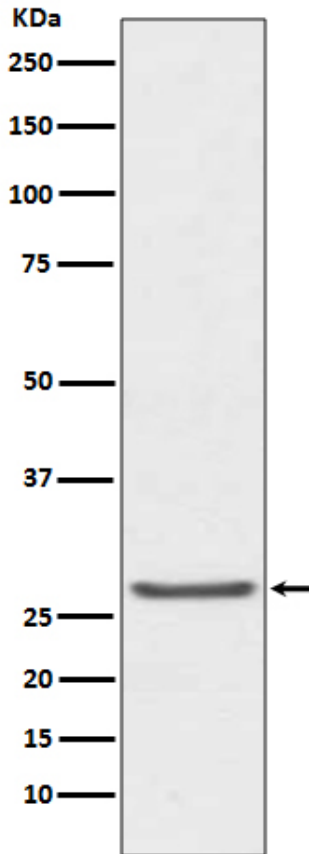
Background Information

TIMP metalloproteinase inhibitor 1, also known as TIMP1, a tissue inhibitor of metalloproteinases, is a glycoprotein that is expressed from the several tissues of organisms. This protein is a member of the TIMP family. The glycoprotein is a natural inhibitor of the matrix metalloproteinases (MMPs), a group of peptidases involved in degradation of the extracellular matrix. In addition to its inhibitory role against most of the known MMPs, the encoded protein is able to promote cell proliferation in a wide range of cell types, and may also have an anti-apoptotic function. Transcription of this gene is highly inducible in response to many cytokines and hormones. TIMP was found to be located about 22 cM proximal to OTC (300461).

Reference

Anti-TIMP1 Antibody (Clone#AAOD-20)被引用在6文献中。

Selected Validation Data



Western blot analysis of TIMP1 expression in human prostate cancer lysate.