

Basic Information

Product Name	Anti-Calbindin/CALB1 Antibody (Clone#AAAA-3)	
Gene Name	CALB1	
Source	Rabbit	
Clonality	Monoclonal	
Isotype	IgG	
Species Reactivity	human, mouse, rat	
Tested Application	WB, IHC, ICC/IF	
Contents	500 ug/ml; Rabbit IgG in phosphate buffered saline, pH 7.4, 150mM NaCl, 0.02% sodium azide, 0.4-0.5 mg/ml BSA and 50% glycerol.	
Immunogen	A synthesized peptide derived from human Calbindin	
Concentration	500 ug/ml	
Purification	Affinity-chromatography	
Observed MW	28 kDa	
Dilution Ratios	Western blot (WB):	1:500-2000
	Immunohistochemistry (IHC):	1:50-200
	Immunocytochemistry/Immunofluorescence (ICC/IF):	1:50-200

Storage

12 months from date of receipt, -20°C as supplied.

Background Information

Calbindin is a calcium-binding protein belonging to the troponin C superfamily. Calretinin is expressed in central and peripheral nervous system and in many normal and pathological tissues. The rat and human calretinin exhibit 98% sequence homology and 91% homology to many other species. Two calcium binding proteins, calbindin and calretinin, have been reported to be expressed in abundance in Purkinje cells and other cell types in the cerebellum.

Selected Validation Data

Product datasheet

**Anti-Calbindin/CALB1 Antibody
(Clone#AAAA-3)**

Catalog Number: BM4988

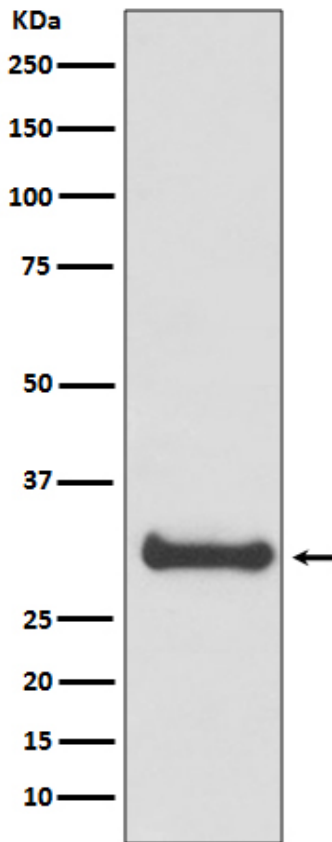
BOSTER[®]

antibody and ELISA experts

BOSTER BIOLOGICAL TECHNOLOGY

Building C21, 3rd to 5th Floors, Optics Valley Biopharmaceutical Accelerator,
East Lake High-Tech Development Zone, Wuhan.

Web: www.boster.com **Phone:** 027-67845390/1/2 **Email:** boster@boster.com



Western blot analysis of Calbindin expression in human fetal brain lysate.