

Basic Information

Product Name	Anti-ATPB/ATP5F1B Antibody (Clone#AADH-1)	
Gene Name	ATP5F1B	
Source	Rabbit	
Clonality	Monoclonal	
Isotype	IgG	
Species Reactivity	human, mouse, rat	
Tested Application	WB, IHC, ICC/IF, IP	
Contents	500 ug/ml; Rabbit IgG in phosphate buffered saline, pH 7.4, 150mM NaCl, 0.02% sodium azide, 0.4-0.5 mg/ml BSA and 50% glycerol.	
Immunogen	A synthesized peptide derived from human ATPB	
Concentration	500 ug/ml	
Purification	Affinity-chromatography	
Observed MW	50 kDa	
Dilution Ratios	Western blot (WB):	1:500-2000
	Immunohistochemistry (IHC):	1:50-200
	Immunocytochemistry/Immunofluorescence (ICC/IF):	1:50-200
	ImmunoPrecipitation (IP):	1:20

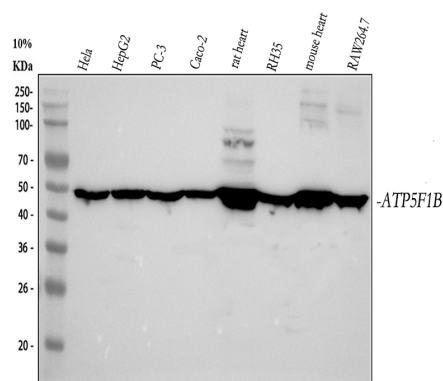
Storage

12 months from date of receipt, -20°C as supplied.

Reference

Anti-ATPB/ATP5F1B Antibody (Clone#AADH-1)被引用在1文献中。

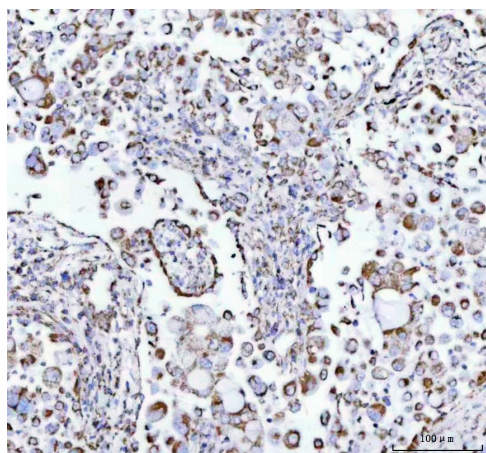
Selected Validation Data



Western blot analysis of anti-ATPB/ATP5F1B antibody (BM5027). The sample well of each lane was loaded with 30 ug of sample under reducing conditions.

Lane 1: human Hela whole cell lysates,
Lane 2: human HepG2 whole cell lysates,
Lane 3: human PC-3 whole cell lysates,
Lane 4: human Caco-2 whole cell lysates,
Lane 5: rat heart tissue lysates,
Lane 6: rat RH-35 whole cell lysates,
Lane 7: mouse heart tissue lysates,
Lane 8: mouse RAW264.7 whole cell lysates.

After electrophoresis, proteins were transferred to a membrane. Then the membrane was incubated with rabbit anti-ATPB/ATP5F1B antigen affinity purified monoclonal antibody (BM5027) at a dilution of 1:1000 and probed with a goat anti-rabbit IgG-HRP secondary antibody (Catalog # BA1054). The signal is developed using ECL Plus Western Blotting Substrate (Catalog # AR1197). A specific band was detected for ATPB/ATP5F1B at approximately 50 kDa. The expected band size for ATPB/ATP5F1B is at 57 kDa.



IHC analysis of ATPB/ATP5F1B using anti-ATPB/ATP5F1B antibody (BM5027) .

ATPB/ATP5F1B was detected in a paraffin-embedded section of human lung cancer tissue. The tissue section was incubated with rabbit anti-ATPB/ATP5F1B Antibody (BM5027) at a dilution of 1:200 and developed using HRP Conjugated Rabbit IgG Super Vision Assay Kit (Catalog # SV0002) with DAB (Catalog # AR1027) as the chromogen.