

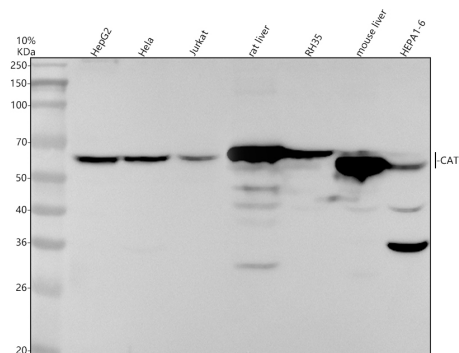
Basic Information

Product Name	Anti-Catalase/CAT Antibody (Clone#AAGA-3)		
Gene Name	CAT		
Source	Rabbit		
Clonality	Monoclonal		
Isotype	IgG		
Species Reactivity	human, mouse, rat		
Tested Application	WB, IHC		
Contents	500 ug/ml; Rabbit IgG in phosphate buffered saline, pH 7.4, 150mM NaCl, 0.02% sodium azide, 0.4-0.5 mg/ml BSA and 50% glycerol.		
Immunogen	A synthesized peptide derived from human Catalase		
Concentration	500 ug/ml		
Purification	Affinity-chromatography		
Observed MW	65 kDa		
Dilution Ratios	Western blot (WB): 1:500-2000 Immunohistochemistry (IHC):1:50-200		

Storage

12 months from date of receipt, -20°C as supplied.

Selected Validation Data



Western blot analysis of anti-CAT antibody (BM5051). The sample well of each lane was loaded with 30 ug of sample under reducing conditions.

Lane 1: human HepG2 whole cell lysates,

Lane 2: human Hela whole cell lysates,

Lane 3: human Jurkat whole cell lysates,

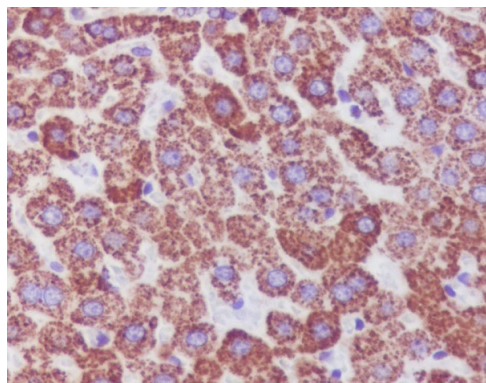
Lane 4: rat liver tissue lysates,

Lane 5: rat RH35 whole cell lysates,

Lane 6: mouse liver tissue lysates,

Lane 7: mouse HEPA1-6 whole cell lysates.

After electrophoresis, proteins were transferred to a membrane. Then the membrane was incubated with rabbit anti-CAT antigen affinity purified monoclonal antibody (BM5051) at a dilution of 1:1000 and probed with a goat anti-rabbit IgG-HRP secondary antibody (Catalog # BA1054). The signal is developed using ECL Plus Western Blotting Substrate (Catalog # AR1197). A specific band was detected for CAT at approximately 60-65 kDa. The expected band size for CAT is at 60 kDa.



Immunohistochemical analysis of paraffin-embedded rat liver, using Catalase Antibody.