

## Basic Information

<b>Product Name</b>	Anti-TDP-43/TARDBP Antibody (Clone#ABAB-20)	
<b>Gene Name</b>	TARDBP	
<b>Source</b>	Rabbit	
<b>Clonality</b>	Monoclonal	
<b>Isotype</b>	IgG	
<b>Species Reactivity</b>	human, mouse, rat	
<b>Tested Application</b>	WB, IHC, ICC/IF, IP, FCM	
<b>Contents</b>	500 ug/ml; Rabbit IgG in phosphate buffered saline, pH 7.4, 150mM NaCl, 0.02% sodium azide, 0.4-0.5 mg/ml BSA and 50% glycerol.	
<b>Immunogen</b>	A synthesized peptide derived from human TDP43	
<b>Concentration</b>	500 ug/ml	
<b>Purification</b>	Affinity-chromatography	
<b>Observed MW</b>	45 kDa	
<b>Dilution Ratios</b>	Western blot (WB):	1:500-2000
	Immunohistochemistry (IHC):	1:50-200
	Immunocytochemistry/Immunofluorescence (ICC/IF):	1:50-200
	ImmunoPrecipitation (IP):	1:20
	Flow Cytometry (FCM):	1:20

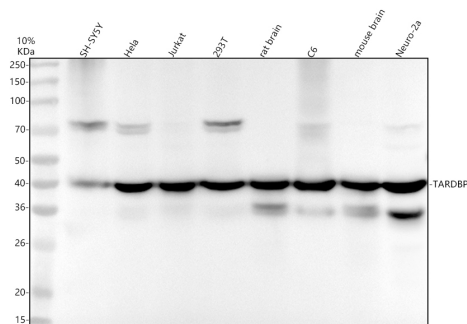
## Storage

12 months from date of receipt, -20°C as supplied.

## Reference

Anti-TDP-43/TARDBP Antibody (Clone#ABAB-20)被引用在2文献中。

## Selected Validation Data



Western blot analysis of anti-TARDBP antibody (BM5092). The sample well of each lane was loaded with 30 ug of sample under reducing conditions.

Lane 1: human SH-SY5Y whole cell lysates,

Lane 2: human Hela whole cell lysates,

Lane 3: human Jurkat whole cell lysates,

Lane 4: human 293T whole cell lysates,

Lane 5: rat brain tissue lysates,

Lane 6: rat C6 whole cell lysates,

Lane 7: mouse brain tissue lysates,

Lane 8: mouse Neuro-2a whole cell lysates.

After electrophoresis, proteins were transferred to a membrane.

Then the membrane was incubated with rabbit anti-TARDBP antigen

affinity purified monoclonal antibody (BM5092) at a dilution of

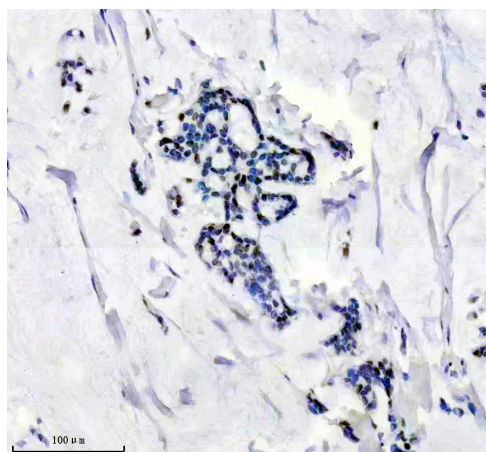
1:1000 and probed with a goat anti-rabbit IgG-HRP secondary

antibody (Catalog # BA1054). The signal is developed using ECL Plus

Western Blotting Substrate (Catalog # AR1197). A specific band was

detected for TARDBP at approximately 40 kDa. The expected band

size for TARDBP is at 45 kDa.



IHC analysis of TARDBP using anti-TARDBP antibody (BM5092).

TARDBP was detected in a paraffin-embedded section of human

breast cancer tissue. The tissue section was incubated with rabbit

anti-TARDBP Antibody (BM5092) at a dilution of 1:200 and developed

using HRP Conjugated Rabbit IgG Super Vision Assay Kit (Catalog #

SV0002) with DAB (Catalog # AR1027) as the chromogen.